

**Rhineland High School Seniors  
Class of 1925**

**Rhineland, Wisconsin**

This document was scanned from the original Rhineland High School yearbook from 1925. Only the seniors from the yearbook have been scanned and an index of the Senior Class has been added for your ease in finding the picture in the yearbook.

**Rhineland High School Seniors Class of 1925 Index**

<b>First Name</b>	<b>Last Name</b>	<b>Page Number</b>
Florence	Adams	4
Bernice	Ajeska	4
Lawrence	Aker	4
Mabel	Anderson	4
Mabel S.	Anderson	5
Hazel	Babino	5
Isabel	Baraba	5
Gladys	Bennett	5
Emma	Bloomquist	6
Edward	Bronk	6
Carl	Bruns	6
Audrey	Bullian	6
Edna	Carlson	7
Irving	Carroll	7
Audrey	Carter	7
Lillian	Charron	7
Florence	Cole	3, 8
Arthur	Cox	8
Leo	Dalton	8
Truman	Davis	8
Gretchen	Evenson	9
Roy	Evenson	9
Esden	Fortier	9
Margaret	Green	9
Herbert	Greunke	10
Stanley	Hallenbeck	10
Wade	Hampton	10
Irma	Hinners	10
Beth	Hollands	11
Florence	Hollsted	11
Borhild	Holter	11
George	Jewell	11
Beatrice	Johnson	12
Gladys	Johnson	12

<b>First Name</b>	<b>Last Name</b>	<b>Page Number</b>
Harry	Johnson	12
Norton	Jones	12
Jervis	Josephs	13
Eleanore	Joslin	13
Clyde	Kirk	3, 13
Gertrude	Knight	13
Clyde	Krueger	14
Helga	Larson	14
Merton	Leadbeter	14
Beryl	Marks	14
Bernard	Nelson	15
Elsie	Nelson	15
Ruth	Niles	15
Frank	Novak	15
Earl	Pecore	16
Edna	Pecore	16
Margaret	Pelong	16
Leo	Powers	16
Mable	Rodd	17
Clara	Rolain	17
Adolph	Sampson	17
Francis	Schleisman	17
Francis	Schliesmann	4
Orvil	Schultz	18
Alex	Sharka	18
Barbara	Simmons	4, 18
Vivian	Skubal	18
Mabel	Soderman	19
James	Stafford	19
Lucille	Stephens	19
Floyd	Swanson	20
Wilbert	Teske	20
Gladys	Thompson	20
Grace	Thompson	20
Russell	Trelevan	20
Eva	Turban	21
Laura	Wallace	21
Vera	Weldon	21
Helen	Wells	21
Eleene	White	22
Florence	White	22
Carl	Wilhelm	22
Elsie	Woolney	22
Henry	Wubker	23
Nina	Young	23



SENIOR CLASS OFFICERS



President - - - - - Clyde Kirk  
Vice-President - - - Francis Schliesmann  
Secretary - - - - - Barbara Simmons  
Treasurer - - - - - Florence Cole



FLORENCE ADAMS  
"Flo"

"She doeth all things well."

BERNICE AJESKA  
"Bernie"

"There are enough serious things in  
life, without considering your-  
self one of them."

Girls' Basket Ball, 2, 3.

LAWRENCE AKER  
"Punky"

"To blush is beautiful,  
But sometimes inconvenient."

Football, 4; "R" Club, 4; Indoor  
Baseball, 2, 3; Basket Ball, 4;  
Glee Club, 2; Orchestra, 4; Class  
Basket Ball, 4.

MABEL ANDERSON  
"Red"

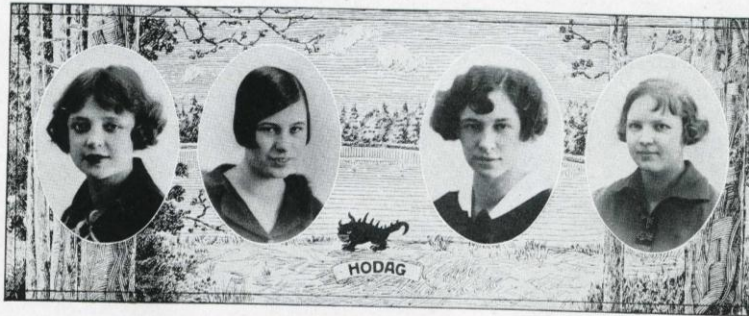
Her hair is not more sunny than  
her heart."

Senior  
Class  
'25

Senior  
Class  
'25

*Handwritten blue ink notes:*  
Mabel Anderson  
Punky  
Bernie  
Florence Adams  
Punky  
Bernie  
Florence Adams  
Punky  
Bernie  
Florence Adams





MABEL S. ANDERSON  
 "Swede"  
 "She studies when she has a notion,  
 Thus often causing a commotion."  
 Trusty Scout, 1.

HAZEL BABINO  
 "Strong"  
 "Her ways are ways of  
 pleasantness."  
 Trusty Scouts, 2, 3, 4; Glee Club  
 3, 4; Operetta, 3, 4.

ISABEL BARABA  
 "Frenchy"  
 "She seems quiet but maybe you  
 don't know her."

GLADYS BENNETT  
 "Top"  
 "She's a mighty jolly lassie,  
 With a mighty level head."  
 Glee Club, 3, 4; Trusty Scouts, 2, 3;  
 Pres. 4; Operetta, 4.  
 Pres. Operetta, 4.

Senior  
 Class  
 '25

Senior  
 Class  
 '25



EMMA BLOOMQUIST  
"Swede"

"Her last year in school,  
But not in the hearts of her school-  
mates."  
Hodag Staff.

EDWARD BRONK  
"Ed"

"He's the head of the class in  
inches."

CARL BRUNS  
"Mike"

"Laugh away sorrow, dash away  
care,  
I'm off for a good time, come if  
you dare.  
Hodag Staff; Indoor Baseball, 1, 2,  
3; Glee Club.

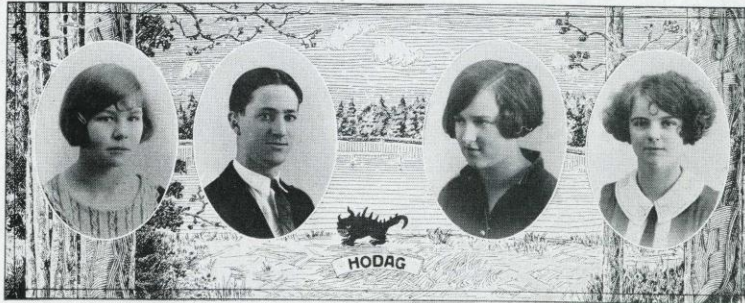
AUDREY BULLIAN  
"Bob"

"Let us not do today, what can be  
done tomorrow."  
Trusty Scouts, 2, 3, 4; Glee Club,  
1; Basket Ball, 1.

Senior  
Class  
'25

Senior  
Class  
'25





EDNA CARLSON  
"Eddie"

"It's nice to be natural,  
When you're so naturally nice."  
Glee Club, 1; Basket Ball, 3; Dra-  
matic Club, 3.

IRVING CARROLL  
"Sheik"

"He always works hard,  
When he goes to a dance."  
"R" Club, 4; Class Basket Ball, 3, 4;  
Glee Club, 2; Debate Circle, 1, 2,  
3; Treas., 4; Junior Play Hi-Y, 4;  
Hodag Staff; Operetta, 2, 3; Dra-  
matic Club, 3.

AUDREY CARTER  
"Haba"

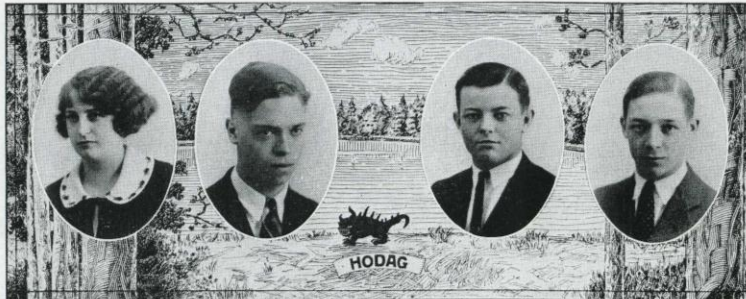
"Little minding what was the rule,  
Audrey giggled her way through  
school."  
Trusty Scouts, 4; Hodag Staff; Bas-  
ket Ball, 3, 4.

LILLIAN CHARRON  
"Lil"

"She fluffs her hair and powders her  
nose,  
"She's nice from her head to the  
tip of her toes."  
Hodag Staff; Glee Club, 1, 2, 3;  
Operetta, 2; Debate Circle, 4.

Senior  
Class  
'25

Senior  
Class  
'25



FLORENCE COLE

"Colie"

"She's the kind of a friend who's still a friend—when all the world's against you."

Basket Ball, 3; Glee Club, 4; Latin Club, 4; Debate Circle, 3, 4; Latin Club, 4; Debate Circle, 3, 4; Trusty Scouts, 3, 4; Hodag Staff; Class Treasurer, 3, 4; Operetta, 4.

ARTHUR COX

"Coxie"

"A fellow struggler in Physics."

LEO DALTON

"Dalt"

"Don't argue with him, if you wish to win, You'll be beaten before you begin." Debate Circle.

TRUMAN DAVIS

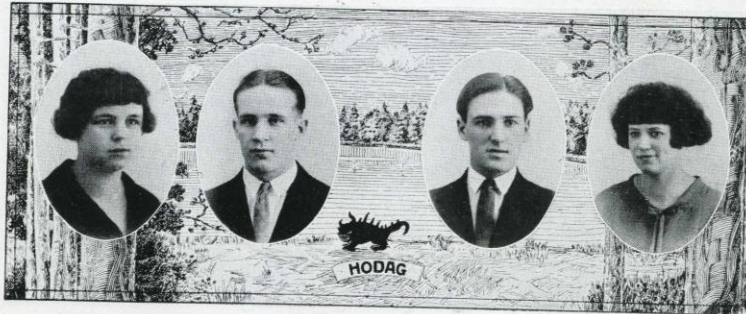
"Dava"

"He is doing the work of a true man." Debate Circle, 3, 4; Class Basket Ball, 2, 3, 4; Indoor Baseball 2, 3.

Senior  
Class  
'25

Senior  
Class  
'25





Senior  
Class  
'25

GRETCHEN EVENSON  
"She has not time to sport away the  
hours,  
All must be earnest in a world like  
ours."

ROY EVENSON  
"Dutch"  
"A thinker, a fine fellow, an ath-  
lete,  
In short, a rare combination."  
Basket Ball, 2, 3, 4; Football, 1, 2,  
3, 4; Debate Circle, 4; "R" Club,  
2, 3, 4.

ESDEN FORTIER  
"Forky"  
"What though the field be lost—all  
is not lost—the ladies  
love me yet."  
Basket Ball, 3, 4; Football, 1, 2,  
3, 4; Indoor Baseball, 1, 2, 3.

MARGARET GREEN  
"Marg"  
"Always happy, always gay,  
Her manners we admire every  
day."

Senior  
Class  
'25



Senior  
Class  
'25

HERBERT GREUNKE

"Hibby"

"He may bluff in other things,  
But he surely knows his history."

STANLEY HALLENBECK

"Stan"

"The one great joy in life he sees  
Is tickling the ivories."  
Hi-Y; Orchestra, 4; Glee Club, 3;  
Operetta, 4.

WADE HAMPTON

"Ham"

"The Silver tongue with accents  
bold,  
Can scarce disguise the heart of  
gold."

Hi-Y; Operetta, 2; Debate Team, 2;  
Junior Play; Debate Circle, 1, 2,  
3, 4; Prom Chairman, 3; Ath-  
letic Manager, 3, 4; Orchestra, 2,  
3, 4; Glee Club, 2; Oratory Con-  
test, 3; Business Manager Hodag  
Staff; Latin Club, 4.

IRMA HINNERS

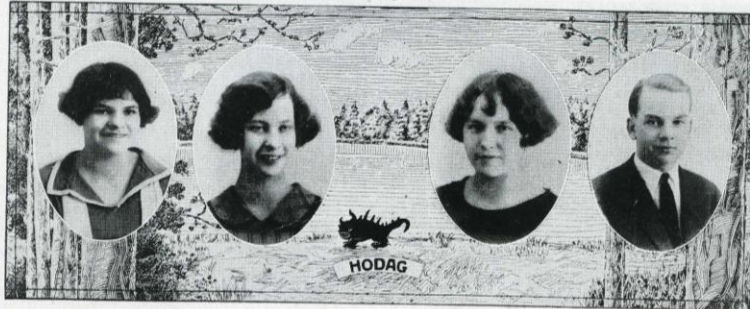
"Punk"

"Early to bed and early to rise—  
and you miss the best part  
of the day."

Glee Club, 1, 2, 3; Trusty Scouts,  
1, 2, 3; Hodag staff; Operetta, 2.

Senior  
Class  
'25





BETH HOLLANDS  
"Kitty"

"Her matchless frankness we adore,  
The frankest girl we ever saw.  
Junior Play, Dramatic Club.

FLORENCE HOLLSTED  
"Flo"

"Although she's short in stature  
She's long in credits."  
Goodman I.

BORHILD HOLTER  
"Norski"

"Full of fun and mischief too,  
Doing things she shouldn't do."

GEORGE JEWELL  
"Bub"

"Of money soon he'll have a horde,  
Why, even now he drives a Ford."

Senior  
Class  
'25

Senior  
Class  
'25





BEATRICE JOHNSON

"Bea"

"Stately and tall—she moves through the hall."

Hodag staff; Commercial Contest, 3; Senior Class Editor.

GLADYS JOHNSON

"Glady"

"May her name be changed"

Indoor Baseball, 3; Class Basketball, 4; Football, 4.

HARRY JOHNSON

"Oxy"

"School? I suppose its a necessary evil."

Indoor Baseball, 3; Class Basketball, 4; Football, 4.

NORTON JONES

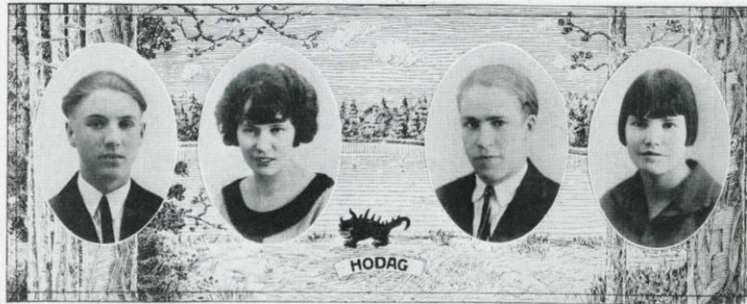
"With graceful steps he strides the streets,

And smiles at all the maidens sweet."

Hi-Y, 1, 2; Pres. 3, 4; Football, 2, 3; Debating Circle, 1, 2, 3, Pres. 4; Latin Club, 4; "R" Club 3, 4; Junior Play; Operetta, 3 4; Indoor Baseball, 1, 2, 3; Hodag Staff.

Senior  
Class  
'25

Senior  
Class  
'25



JERVIS JOSEPHS

"Jervy"

"All the great men are dead—and  
I'm not feeling well."

ELEANORE JOSLIN

"Nory"

"She has common sense,  
In a way that's uncommon."

CLYDE KIRK

"Kirkie"

"He's a star in athletics, debate, class  
rooms and oratory—  
"OUR PRESIDENT"

Basketball 2, 3; Captain, 4; Class  
Basketball, 1, 2; Hi-Y 3; Sec. 4;  
Class President, 1, 2, 3, 4; Foot-  
ball, 2, 3, 4; Indoor Baseball, 2,  
3; Latin Club, 4; Debate Circle,  
4; Hodag Staff, editor; Dramatic  
Club President, 3; "R" Club 2;  
Pres. 4.

GERTRUDE KNIGHT

"Gerty"

"Bright and witty—small yet true,  
There are not many just like you."

Senior  
Class  
'25

Senior  
Class  
'25





CLYDE KRUEGER

"Fritz"

"Why should life all labor be?  
This is just what I can't see."  
Junior Play; Hodag Staff.

HELGA LARSON

"Art"

"Motto—deeds not words."

MERTON LEADBETER

"Mert"

Hi-Y; Hodag Staff; Junior Play.

BERYL MARKS

"Goodness is beauty in its best  
estate."

Glee Club, 1; Trusty Scouts, 2; Latin  
Club, 4.

Senior  
Class  
'25

Senior  
Class  
'25





BERNARD NELSON  
 "Bolla"  
 They say still water runs deep.

ELSIE NELSON  
 "EI"  
 "So with the world thy gentle ways,  
 Shall be an endless theme of  
 praise."  
 Glee Club, 2, 3.

RUTH NILES  
 "Rufus"  
 "She was standing in the corner,  
 She was turning on her toes,  
 She must have been a senior,  
 From the powder on her nose.  
 Glee Club, 1, 2, 3; Trusty Scouts 1,  
 2, 3, 4; Operetta, 2, 3.

FRANK NOVAK  
 "Gogan"  
 "Just one girl and only seven nights  
 a week to see her."  
 Basketball 3, 4; "R" Club 3, 4; Hi-Y  
 Treasurer 1; Hodag Staff; Glee  
 Club; Orchestra 4; Operetta 4;  
 Football 2, 3, 4; Indoor Baseball  
 1, 2, 3; Class Basketball 1, 2, 3;

Senior  
 Class  
 '25

Senior  
 Class  
 '25



EARL PECORE

"Shorty"

"When he's not laughing—He's  
doing something else."  
Indoor Baseball.

EDNA PECORE

"Frenchy"

"Small in stature—but large in  
action."  
Glee Club; Basketball 4.

MARGARET PE LONG

"Mugs"

"Margaret so slim and tall,  
Never loiters in the hall."

LEO POWERS

"Peg"

"Man has his will—but woman has  
her way."  
Glee Club 1; French Club 4.

Senior  
Class  
'25

Senior  
Class  
'25





*There's luck  
to you say  
up. Glad  
Be G. Mabel*

MABLE RODD  
"Meb's"

"The heart may be read  
through the face."

Glee Club 1, 2, 3; Trusty Scouts 1,  
2, 3; Junior Play; Hodag Staff;  
Assistant Editor; Operetta 2;  
Thrift Cashier 4.

CLARA ROLAIN  
"Rollie"

"To grow or not to grow— that  
is the question."

ADOLPH SAMPSON  
"Sam"

"Of all the things I like the best—  
I much prefer to sit and rest."  
Class Basketball 1; Football 1, 2 3;  
"R" Club 2, 3, 4; Basketball 1, 2,  
3; Track 1.

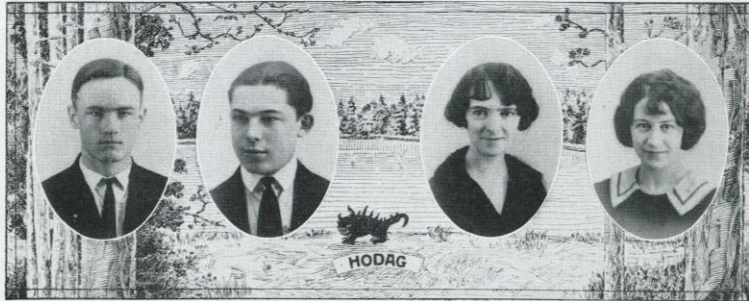
FRANCIS SCHLEISMAN  
"Fatty"

"Master of the violin."  
Basketball 3, 4; Class Basketball 1,  
2, 3, 4; Debate Circle 1, 2, 3, 4;  
Junior Play; Class Vice President;  
Indoor Baseball; Orchestra 1, 2,  
3, 4; Operetta 1, 2, 3, 4.

Senior  
Class  
'25

Senior  
Class  
'25





ORVIL SCHULTZ

"Schulzie"

"Speech is silver, but silence is golden."

ALEX SHARKA

"Sharky"

"Life is a serious proposition—girls too."

Operetta; Orchestra; Indoor Baseball 2.

BARBARA SIMMONS

"Simmon"

"She does her own thinking and needs little advice."

Glee Club 1, 2, 3, 4; Operetta 2, 3, 4; Class Secretary 4; Latin Club 4; Hodag Staff.

VIVIAN SKUBAL

"Viv"

"Knowledge is no burden."

Glee Club 1, 2; Class Basketball 4.

Senior  
Class  
'25

Senior  
Class  
'25



MABEL SODERMAN  
 "Soddy"  
 "Good nature bringeth her  
 happiness."

JAMES STAFFORD  
 "Jim"  
 "His greatest task was to get a girl."

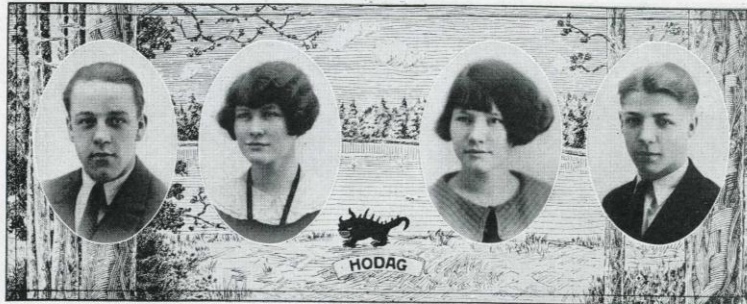
LUCILLE STEPHENS  
 "Lu"  
 "I believe in the downfall of men—  
 vile wretches."  
 Class Basket Ball, 3; Glee Club, 1,  
 2, 3; Latin Club, 4; Operetta, 3.

FLOYD SWANSON  
 "Flishy"  
 "His tongue was worse than a  
 woman's."  
 Football, 4; "R" Club, 4; Base-  
 ball, 3.

Senior  
 Class  
 25

Senior  
 Class  
 '25





WILBERT TESKE

"Teck"

"He's our star in basket ball."  
 Football, Antigo 2, Rhinelander 3,  
 4; Basket Ball, 2, 3, 4; "R" Club,  
 3; Vice-Pres., 4; Class Basket  
 Ball, 1, 2.

GLADYS THOMPSON

"Glade"

"It's better to be a participant than  
 a spectator."  
 Basket Ball, 3, 4; French Club, 4;  
 Glee Club, 1.

GRACE THOMPSON

"We hear some mighty nice things  
 about her."

French Club; Dramatic Club; Lit-  
 erary Society, 1.

RUSSELL TRELEVAN

"Ted"

"Good looker, good talker—and a  
 friend indeed."

*Part your head, you  
 were -  
 to about G.T.*

*Senior  
 Class  
 '25*

*Senior  
 Class  
 '25*





*Handwritten notes in blue ink:*  
 Singers in the  
 Bleckin' weeks.  
 Bas  
 Latta have  
 Class

EVA TURBAN  
 "Efficiency 100 per cent."  
 French Club.

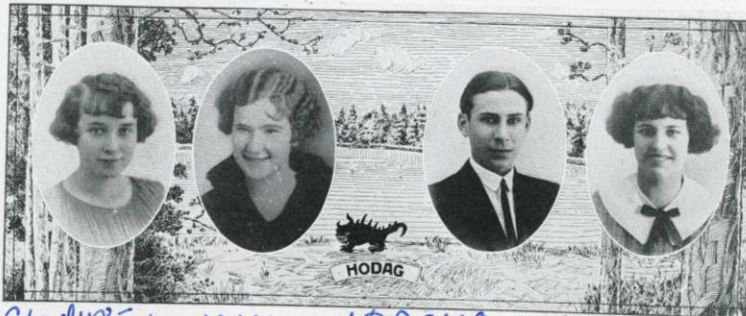
LAURA WALLACE  
 "Wally"  
 "All who joy would win must share  
 it—  
 Happiness was born a twin."  
 Glee Club, 1; Junior Play Assistant.

VERA WELDON  
 "Jimmie"  
 "Hair as black as fire-burnt prairie,  
 Eyes that flash forth glances  
 merry."  
 Glee Club, 2, 3, 4; Class Basket Ball  
 3, 4; Operetta, 2, 3.

HELEN WELLS  
 "Hon"  
 "When no one else knows—they  
 call on Helen."  
 Gleason, 1; Hodag Staff; Dramatic  
 Club; Senior Editor School News.

Senior  
 Class  
 '25

Senior  
 Class  
 '25



*Dear Gladys -  
I surely wish you  
loads of luck as  
a "senior" wh! I forgot to say a  
"dignified senior"  
L.S. Peggy*

ELEENE WHITE  
"Peggy"

"She smiled on many a person just  
for fun,  
But I knew there was only one."  
Glee Club, 2, 3, 4; Trusty Scouts,  
2, 3, 4; Operetta, 2, 3, 4; French  
Club Treas., 4; Hodag Staff.

FLORENCE WHITE  
"Flossie"

"At first she seems quiet and shy,  
But after you know her—Oh! My."  
Commercial Contest, 3, 4.

CARL WILHELM  
"Farmer"

"His humor is lofty, his tongue  
fled, his eye ambitious.  
Basket Ball, 3, 4; Football, 4; "R"  
Club, 4; Indoor Baseball, 3.

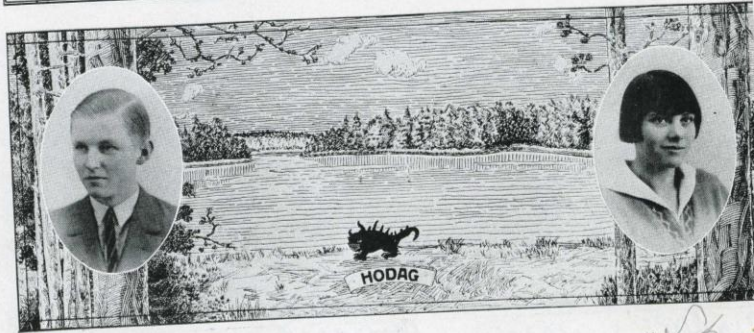
ELSIE WOOLNEY  
"El"

"Blessed are the hard workers—for  
they shall inherit the high marks."

Senior  
Class  
'25

Senior  
Class  
'25





HENRY WUBKER  
 "Hank"  
 "A likeable chap we all agree,  
 A ready smile for all has he."  
 Operetta, 4; Indoor Baseball; Or-  
 chestra; Football, 4.

Senior  
 Class  
 '25

NINA YOUNG  
 "Chuck"  
 "There's mischief lurking behind  
 those eyes."  
 Glee Club, 1, 2, 3; Sec.-Treas., 4;  
 Operetta, 2, 3, 4; Trusty Scouts  
 Sec.-Treas., 2; Vice-Pres., 3, 4.

*Speaking of Light  
 Redd Par  
 Day - I  
 em - el  
 that wa  
 Senior  
 Class  
 '25  
 party  
 went  
 to low  
 another  
 on  
 with ju.  
 ma.*