

Rhineland High School Seniors Class of 1928

Rhineland, Wisconsin

This document was scanned from the original Rhineland High School yearbook from 1928. Only the seniors from the yearbook have been scanned and an index of the Senior Class has been added for your ease in finding the picture in the yearbook.

Rhineland High School Seniors Class of 1928 Index

First Name	Last Name	Page Number
Joe	Anderle	5
Edna	Asmundsen	5
Dan	Banta	5
Arthur	Barlow	5
James	Beaulieu	5
Lillian	Benson	5
Mabel	Bentley	6
Beth	Brown	6
Marjorie	Browning	6
Nila	Carter	6
Harold	Cohen	6
Einar	Dahlin	6
Hubert	Damask	7
Joe	Dau	7
Rosa	Davis	4, 7
Rhinehart	De Byle	7
Lucile	Derocher	7
Marion	Farris	7
Robert	Farris	8
Donald	Field	8
Violet	Foster	8
Wesley	Ginzl	8
Edna	Greunke	8
Edward	Groboski	8
Esther	Gustafson	9
Evelyn	Gustafson	9
Clarence	Hardell	9
Winifred	Harter	9
Wesley	Higgs	9
David	Holmes	9
Thorvald	Holter	10
Fern	Jarvis	10
Vernon	Johnson	10
George	Jorsch	10
Millicent	Josephs	10
Iola	Knabe	10

First Name	Last Name	Page Number
Marie	Kongslie	11
Irene	Kramer	11
Karl	Kretlow	11
Robert	Kruger	11
Richard	Kugel	11
Chester	Kuhl	11
Elaine	Kurtzweil	12
Mary	La Voy	12
Dorothy	Landberg	12
Gladys	Lassig	12
Katherine	Leadbetter	12
Ruth	Lee	12
Velma	Lewis	13
Walter	Lindwall	13
Geraldine	Lord	13
Stella	Malsavage	13
Lorraine	Marks	13
Ben	Miller	13
Marion	Miller	14
Earl	Morrill	14
Lyman	Nelson	14
Rose	Nichols	14
Raeburn	O'Malley	4, 14
Irene	Onson	14
Frank	Paulson	4, 15
Leslie	Peterson	15
Arlyle	Priebe	15
Lela	Rice	15
George	Richards	15
Josephine	Riley	15
Francis	Ruggles	16
Anton	Sarocka	16
Elizabeth	Scheidegger	16
Dale	Schlicting	16
Pearl	Schoening	16
Josephine	Seaman	16
Edward	Stoltz	17
Claire	Sweo	17
Marie	Teche	17
Jessie	Terrio	17
Gertrude	Terzynski	17
John	Thilmany	17
Clarence	Toburen	18
Mary	Tuchalski	17
Earl	Vachon	18
Edith	Van Pay	18
Lorraine	Vevea	18
Theodore	Vlahakis	18

First Name	Last Name	Page Number
Riley	Wilke	18
Douglas	Willette	18



1928
HODAG



PAULSON

DAVIS

O'MALLEY

Senior Officers

President

FRANK PAULSON

Vice-President

ROSA DAVIS

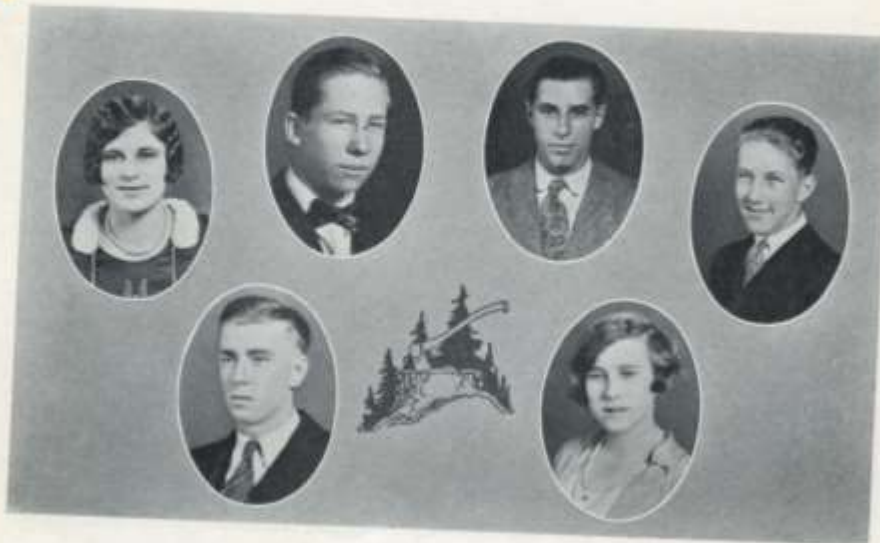
Secretary and Treasurer

RAEBURN O'MALLEY

*Will feel remember the
Senior Officers days we
in H.S. have had a
great time
Katie
P.O.*



1928
HODAG



JOE ANDERLE "Gus"
Band (2, 3, 4); Glee Club (2, 3, 4);
Operetta (2, 3, 4); Class Play (3);
Prom Committee (3); Class President
(1, 2); Hi-Y (2, 3, 4); Vice-President
(3); President (4); French
Club (3, 4); President (4); Debat-
ing Circle (2).

*"Dignified and very wise,
But there's a wicked gleam in bright blue
eyes."*

ARTHUR BARLOW "Art"
Basket Ball (2, 3, 4); Football (4);
"R" Club (3, 4); Treasurer (4).
*"I wear my heart on my sleeve for all the
hens to pick at."*

EDNA ASMUNDSEN "Eddy"
Home Ec. Club (1, 2); Treasurer
(2); Class Play (3).
*"She's quiet until you know her and
then——"*

JAMES BEAULIEU "Jim"
Prom Committee (3).
*"Work or not to work—that is the
question."*

DAN BANTA "Dan"
"R" Club (2, 3, 4); President (3);
Hi-Y (4); Vice-President (4); Foot-
ball (1, 2, 3, 4); Captain (4); De-
bating Circle (2); Latin Club (1);
Prom Committee (3).
*"Of money soon he'll bode,
Why, even now he has a Ford."*

LILLIAN BENSON "Li"
Glee Club (3, 4); Operetta (3, 4);
Prom Committee (3); Latin Club
(1, 2, 3, 4).
*"Always happy, always gay;
Her manners we admire every day."*

1928
HODAG



*Well, Kallberg
I should not
you went
my hope
down, I
had now
for me
don't
think
W. O. Shan*

MABEL BENTLEY "Mehs"
Glee Club (1, 2); Home Ec. Club
(2); President (2); French Club (3).
*"Someone call me at sunrise, but don't let
the sun rise too blamed early."*

NILA CARTER "Nila"
Glee Club (1); Home Ec. Club (1, 2)
"If there's a laugh, Nila will laugh it."

BETH BROWN "Mac"
Latin Club (1, 2).
*"To those who know thee not, no words
can paint.
To those who know thee well, all words
are faint."*

HAROLD COHEN "Coney"
Band (4); Orchestra (4).
*"Change me! Change me! O time in thy
flight,
Make me a wild man just for tonight."*

MARJORIE BROWNING "Marj"
Band (2, 3, 4); Glee Club (1, 2, 3,
4); Vice President (2); President
(4); Track Captain (1, 3); Dramat-
ic Club (4); Operetta (1, 2, 3, 4);
Orchestra (4); Cheer Leader (3, 4);
Prom Chairman (3); Latin Club
(1, 2, 3, 4); Consul (4); Debating
Circle (1, 2, 3); Basket Ball (3, 4);
Hodag Staff (4).
*"The harder I try the gooder to be the
worseer I am."*

EINAR DAHLIN "Stiff"
*"Beware, I may do something sensational
yet."*



1928
HODAG



HUBERT DAMASK "Chib"
*"A little knowledge is a dangerous thing;
therefore I fear it."*

RHINEHART DE BYLE "Spud"
*"Let the rest of the world go by—I'll
not budge an inch."*

JOE DAU "Joe"
"Beware the fury of a patient man."

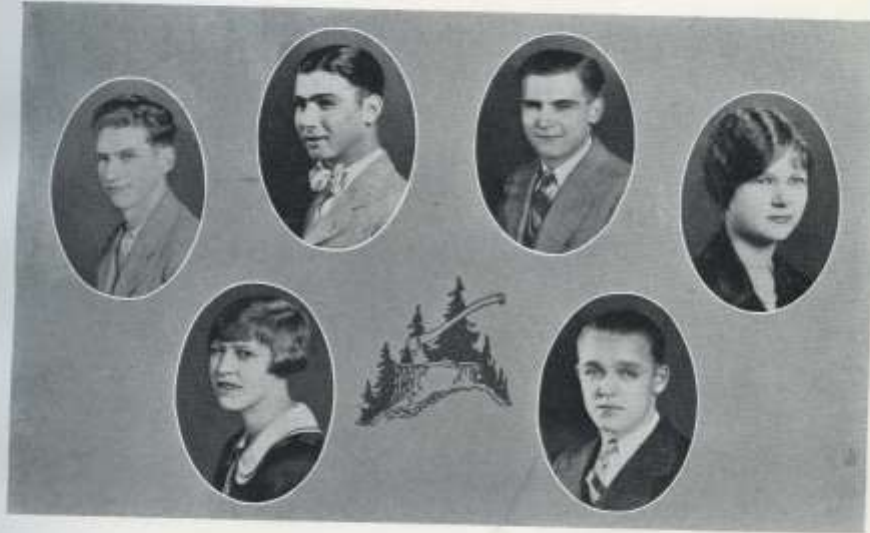
LUCILE DEROCHE "Lu"
*"What's the use of working when there
is so much else to do."*

ROSA DAVIS "Babe"
Glee Club (4); Dramatic Club (4);
Class Play (3); Class Vice President
(4); Debating Circle (2); Home Ec.
Club (2); Pres. (2) Operetta (4).
"Life is a serious proposition—boys too."

MARION FARRIS "Midge"
Basket Ball (1, 2); Glee Club (1);
Home Ec. Club (1, 2).
"It's awful lonesome, being good."

*Chew up your pretty
oh, of course that 'fall!
to R. P. S.
loads of snubs!
Marion.*

1928
HODAG



ROBERT FARRIS "Bob"
Football (4); Hi-Y (4).
*"A little bluffing now and then,
Doesn't hurt the best of men."*

WESLEY GINZL "Ginger"
*"In truth, I walked right up to her and
ne'er suffered a tremor of my heart."*

DONALD FIELD "Don"
Latin Club (3); President (3); Board
of Control (4); Basket Ball (4).
*"My only books are women's looks,
I sure do love to study."*

EDNA GREUNKE "Edna"
Latin Club (1, 2, 3, 4); Glee Club
(4); Hodag Staff (4).
"I love not men—they are so fickle."

VIOLET FOSTER "Vi"
*"She's little but she's wise,
She's a terror for her size."*

EDWARD GROBOSKI "Crowbar"
*"Names don't count—look what I would
be."*

*Good luck in the
future Karl.
Kenneth Jones.*

Page Twenty-Three



1928
HODAG



ESTHER GUSTAFSON "Esther"
Glee Club (4); Prom Committee (3);
Class Play (3); Home Ec. Club
(1, 2).
*"Sometimes she's glad, sometimes she's
mad.
Ever mischievous, but never bad."*

WINIFRED HARTER "Win"
Dramatic Club (4); Operetta (3);
Orchestra (4); Class Play (3); Prom
Committee (3); Latin Club (2);
French Club (2); Hodag Staff (4).
*"Blessed are the hard workers, for they
shall inherit the high marks."*

EVELYN GUSTAFSON "Gussie"
*"If she will, she will, and you may de-
pend on 't;
If she won't, she won't, and that's the
end on 't."*

WESLEY HIGGS "Wes"
Science Club (3).
*"O mischief, thou art swift to enter into
the thoughts of a desperate man."*

CLARENCE HARDELL "Senator"
Band (2, 3, 4); Secretary and Treas-
urer (4); Glee Club (3, 4); Vice
President (4); Dramatic Club (4);
Operetta (3, 4); Orchestra (4); Class
Play (3); Prom Committee (3);
Class Vice-President (3); French Club
(3, 4); Debating Circle (2); Board
of Control (3); Hi-Y (2, 3, 4);
Hodag Staff (4).
"The thickest thinker that ever think."

DAVID HOLMES "Spot"
*"Of all the things I like best, I much prefer
to sit and rest myself."*



1928
HODAG



THORVALD HÖLTER "Tuva"
 Dramatic Club (4); Class Play (3);
 Latin Club (1, 2); Debating Circle
 (1, 2); Declamatory Contest (2, 3,
 4); Hodag Staff (4).
*"You girls, who to the cave man bow,
 Have hopes, for here is one right now."*

GEORGE JORSCH "Judge"
 Track (3).
*"He is a hustler, but this should not be
 told above a whisper."*

FERN JARVIS "Frenchy"
 Glee Club (1, 2, 3, 4); Operetta (1,
 3, 4); French Club (3, 4); Social
 Chairman (4); Latin Club (1, 2, 3,
 4).
*"She argues things wrong,
 She argues things right—
 If you'd let her alone
 She'd argue all night."*

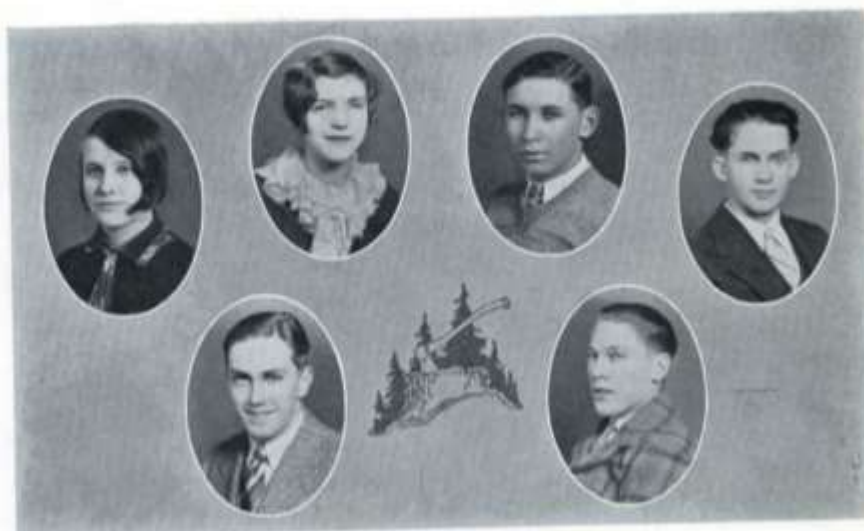
MILLICENT JOSEPHS "Milly"
 Glee Club (3); Debating Circle
 (1, 2); Home Ec. Club (2).
*"When night hath set her silver lamp on
 high, then is the time for study."*

VERNON JOHNSON "Vernon"
*"Plague, if they ain't somepin' in wock
 at kind of goes agin' me."*

IOLA KNABE "Socko"
*"A nickname is the hardest stone that a
 devil can throw at a man."*



1928
HODAG



MARIE KONGSLIEN "Peggy"
Class Play (3); Home Ec. Club (2).
"I have immortal longings in me."

ROBERT KRUGER "Bob"
"What's the hurry?"

IRENE KRAMER "Irene"
Home Ec. Club (1).
*"The best way to help yourself is to let
your neighbor help you."*

RICHARD KUGEL "Kutz"
Latin Club (1, 2); Debating Circle
(2); "R" Club (4); Hi-Y (3, 4).
*"Talk to him of Jacob's Ladder, and he
would ask you the number of steps."*

KARL KRETLOW "Ajax"
Band (2, 3, 4); Glee Club (1, 2,
3, 4); Secretary and Treasurer (2);
Operetta (1, 2); Orchestra (4); Prom
Committee (3); Latin Club (1, 2);
Consul (2); Debating Circle (1, 2);
"R" Club (4); Hodag Staff (4);
Business Manager (4).
*"If I ever find love, I'll analyze it in a
test tube."*

CHESTER KUHL "Chet"
Football (3, 4); "R" Club (4);
Track (3).
*"Sometimes he likes to study;
Again, he likes to play;
But you have a good time with
"Chet" any old day."*

1928
HODAG



ELAINE KURTZWEIL "Elaine"
"All work and no fun, is not the life for me."

MARY LA VOY "Mary"
"Very quiet when no one is near."

DOROTHY LANDBERG "Dorothy"
"To work or not to work? That is the question."

KATHERINE LEADBETTER "Katchie"
Band (2, 3, 4); Glee Club (1, 2, 3, 4); Prom Committee (3); Operetta (1, 2, 3, 4); Basket Ball (3, 4); French Club (3, 4); Debating Circle (2).
"She studies when she has a notion, Thus causing quite a great commotion."

GLADYS LASSIG "Gladys"
"I prefer to seem good, rather than to be so."

RUTH LEE "Ruth"
Glee Club (1, 2, 3, 4); Vice President (4); Dramatic Club (4); Operetta (1, 2, 3, 4); Basket Ball (3); Band (2); Prom Committee (3); Class Social Chairman (4); Latin Club (1, 2, 3, 4); Tribune (2); Scribs (3).
"Never mind, let him be; Bye and bye he'll follow after."

Handwritten notes:
"I'm sure I was a student-
I had at least - sorry if it
is wrong - any of it
interference with your
work -
Lead + out
instead of it
Punch -"

1928
HODAG



Handwritten blue ink notes:
 Rusty
 Stella
 Marks
 Ben
 Jerry
 Walt

VELMA LEWIS "Rusty"
 Basket Ball (3, 4).
*"Those who wear a cheerful grin
 Seem to be the ones who win."*

STELLA MALSAVAGE "Stella"
*"She has common sense in a way that is
 uncommon."*

WALTER LINDWALL "Walt"
*"Wanting to work is so rare a thing it
 should be encouraged."*

LORRAINE MARKS "Marks"
 Glee Club (1, 2); French Club (1,
 2); Home Ec. Club (1, 2).
*"She puts all her cares in a box and sits
 on the lid and smiles."*

GERALDINE LORD "Jerry"
 Glee Club (1, 2, 4); Dramatic Club
 (4); Operetta (1, 2, 4); French
 Club (3, 4); Secretary and Treasurer
 (4); Prom Committee (3); Latin
 Club (1, 2); Debating Circle (2, 3);
 Declamatory Contest (2, 3).
*"Dark brown eyes are dangerous things.
 They sometimes keep one from getting
 wings."*

BEN MILLER "Ben"
"I sleep—wake me not."

Here's to
 business men
 The class owes a
 great deal to you and
 your hard work.
 Good Luck,
 Marion Miller

1928
 HODAG



Happy New Year
 I'll never be
 your
 business
 manager
 Rose
 Rae

MARION MILLER "Marion"

Glee Club (1, 2, 3, 4); Operetta (3, 4); Class Play (3); Latin Club (1, 2, 3, 4); French Club (2, 3); Declamatory Contest (3); Hodag Staff (4).

"She doeth all things well."

ROSE NICHOLS "Rose"

Glee Club (2, 3, 4).

"Laugh and the world laughs with you,
 Frown and you wrinkle your face"

EARL MORRILL "Earl"

Band (2, 3, 4); President (4); Debating Circle (2); Hi-Y (3, 4); Class Secretary and Treasurer (3); Orchestra (4); French Club (3, 4); Hodag Staff (4).

"Answer me, burning stars of night!
 Where has my maiden dear gone?"

RAEBURN O'MALLEY "Rae"

Glee Club (1, 2, 3, 4); Latin Club (1, 2, 3); Dramatic Club (4); Secretary and Treasurer (4); Debating Circle (1, 3); Band (2); Operetta (3, 4); Prom Committee (3); Class Secretary and Treasurer (4); Basket Ball (4).

"She couldn't be good if she would,
 And she wouldn't be good if she could."

LYMAN NELSON "Nels"

"I'm not a bit afraid of work—I can sit
 by it all day and it doesn't frighten
 me a bit."

IRENE ONSON "Feitz"

Glee Club (1, 2); Operetta (1); French Club (1); Home Ec. Club (1, 2).

"I believe in the downfall of men—vile
 wretches."



1928
HODAG



FRANK PAULSON "Frank"
Class President (3, 4); Football (4);
Hodag Staff (4); "R" Club (4);
Board of Control (3, 4); Business
Manager (3); Commercial Contest
(3).
"Editor: 'nuff sed."

LELA RICE "Lela"
"Excuse me if I should blush."

LESLIE PETERSON "Drob"
Hi-Y (2, 3, 4); "R" Club (3, 4).
"God bless the man who invented sleep."

GEORGE RICHARDS "Oofa"
Band (2); Glee Club (3, 4); Secretary
and Treasurer (4); Operetta (3,
4); Football (3, 4); Latin Club (1,
2, 3, 4); Hi-Y (3, 4); "R" Club
(3, 4); Debating Circle (2); Class
Vice President (2).
*"I'd like to be an officer and wear a
shiny sword."*

ARLYLE PRIEBE "Dolly"
"Why worry? Cafe will kill a cat."

JOSEPHINE RILEY "Joe"
*"Laugh away sorrow, dash away care.
I'm off for a good time—come if you
dare."*

1928
HODAG



FRANCIS RUGGLES "Otto"
Glee Club (1, 2, 3, 4); Operetta (2, 3, 4); Hi-Y (3, 4); Debating Circle (2); Class Play (3); Dramatic Club (4).
"There was a time when I was very small."

DALE SCHLICHTING "Stick"
Band (2, 3); Hi-Y (3, 4); Track (3).
"I am Sir Oracle, and when I ope my lips let no dog bark."

ANTON SAROCKA "Tony"
Class Play (3); Football (3, 4); "R" Club (3, 4).
*"In football 'Tony' is a bear,
A track star, too, is he;
An athlete with curly hair—
What more can a hero be?"*

PEARL SCHOENING "Pearl"
Latin Club (1).
"Enjoy life 'ere it is fled, for when you die, you're a long time dead."

ELIZABETH SCHEIDEGGER "Lizzie"
*"For that eye so modestly beaming,
You'd never dream of the mischief she's dreaming."*

JOSEPHINE SEAMAN "Jo"
Home Ec. Club (1, 2).
"Worry and I have never met."

and out one
 of us
 don't forget
 Skippy
 our glasses
 we've all
 been so proud
 of you
 Best of luck
 my my

1928
HODAG



EDWARD STOLTZ "Ed"
*"I often wonder who will run the world
 after I leave it."*

CLAIRE SWEO "Toot"
*"Cheer up, you can't get out of this world
 alive anyway."*

JESSIE TERRIO "Jessie"
"A winning way, a pleasant smile."

MARIE TECHE *Skippy*
 Glee Club (4); Dramatic Club (4);
 Latin Club (1, 2).
*"She fluffs her hair and powders her nose,
 She's nice from her head to the tip of
 her toes."*

JOHN THILMANY "Chinky"
"Both wise and otherwise."

GERTRUDE TERZYNSKI "Gett"
*"Spring is here and there is a song in my
 heart!"*

MARY TUCHALSKI "Mary"
*"I don't care how you spell my name.
 I'll change it sometime anyway."*



1928
HODAG



*Bill Kael and
we showed the
undisciplined what
the dignified senior
could do. Best of luck
to you.*

EARL VACHON "Frenchy"
Hodag Staff (4).
"Don't call me for breakfast, boys, it
would make the day too long."

EDITH VAN PAV "Edith"
"Some would say she's quiet,
but if you knew her, you'd deny it."

RILEY WILKE "Riley"
Band (2, 3).
"A peaceful life is all I crave."

LORRAINE VEVEA "Vev"
Glee Club (4); Dramatic Club (4);
Basket Ball (3, 4); Captain (3);
Latin Club (1, 2); Debating Circle
(2); Hodag Staff (4).
"Why be good, when it's much nicer
to be naughty."

DOUGLAS WILLETTE "Doug"
"To blush is beautiful, but sometimes
inconvenient."

THEODORE VLAHAKIS "Ted"
Glee Club (3); Football (2, 3);
Hi-Y (4); "R" Club (3, 4); Dra-
matic Club (4); President (4); Oper-
etta (3); Band (2); Class Play (3).
"What though the field be lost—all is not
lost—the ladies love me yet."

CLARENCE TOBUREN "Tub"
"How can I leave thee?"