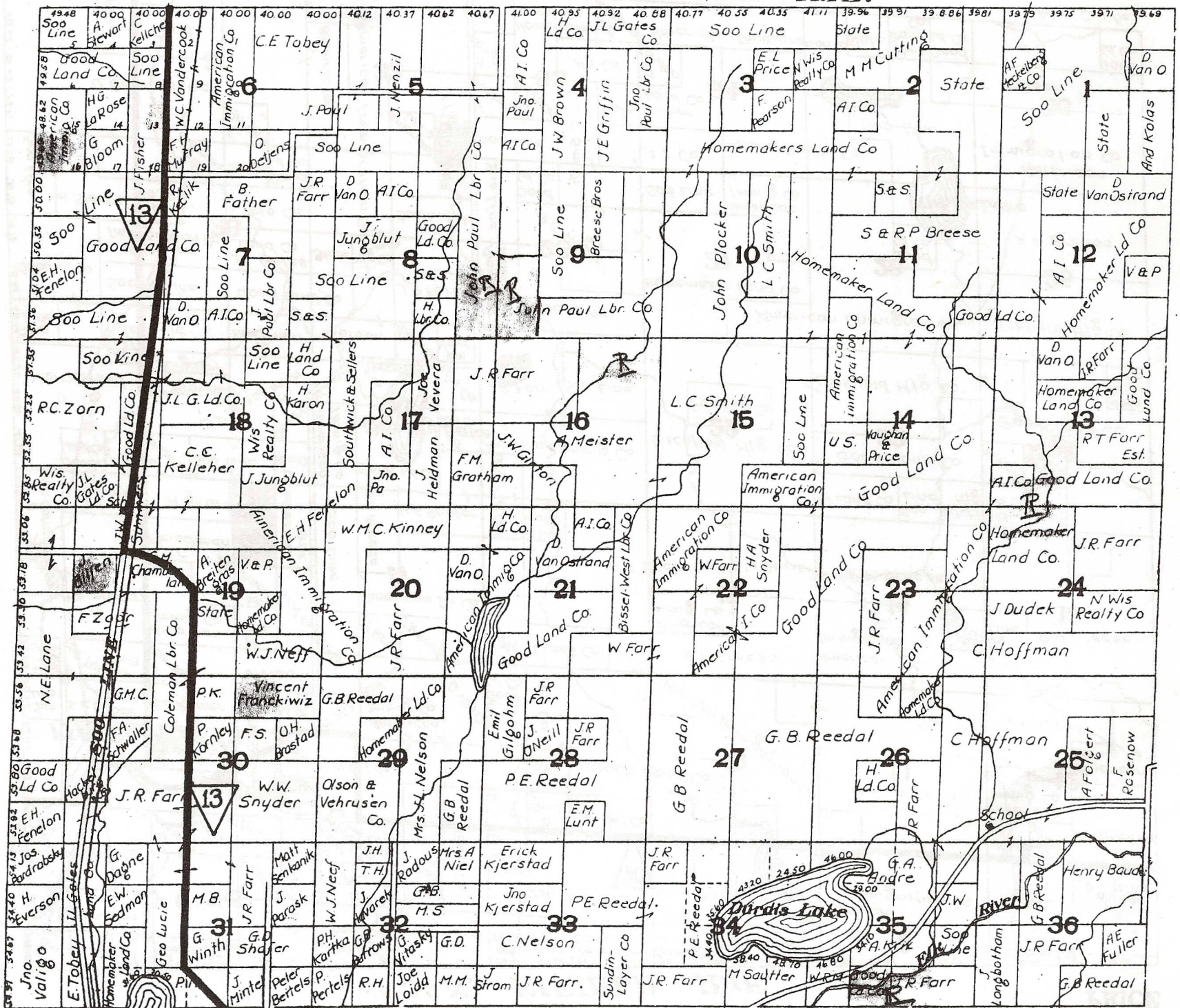
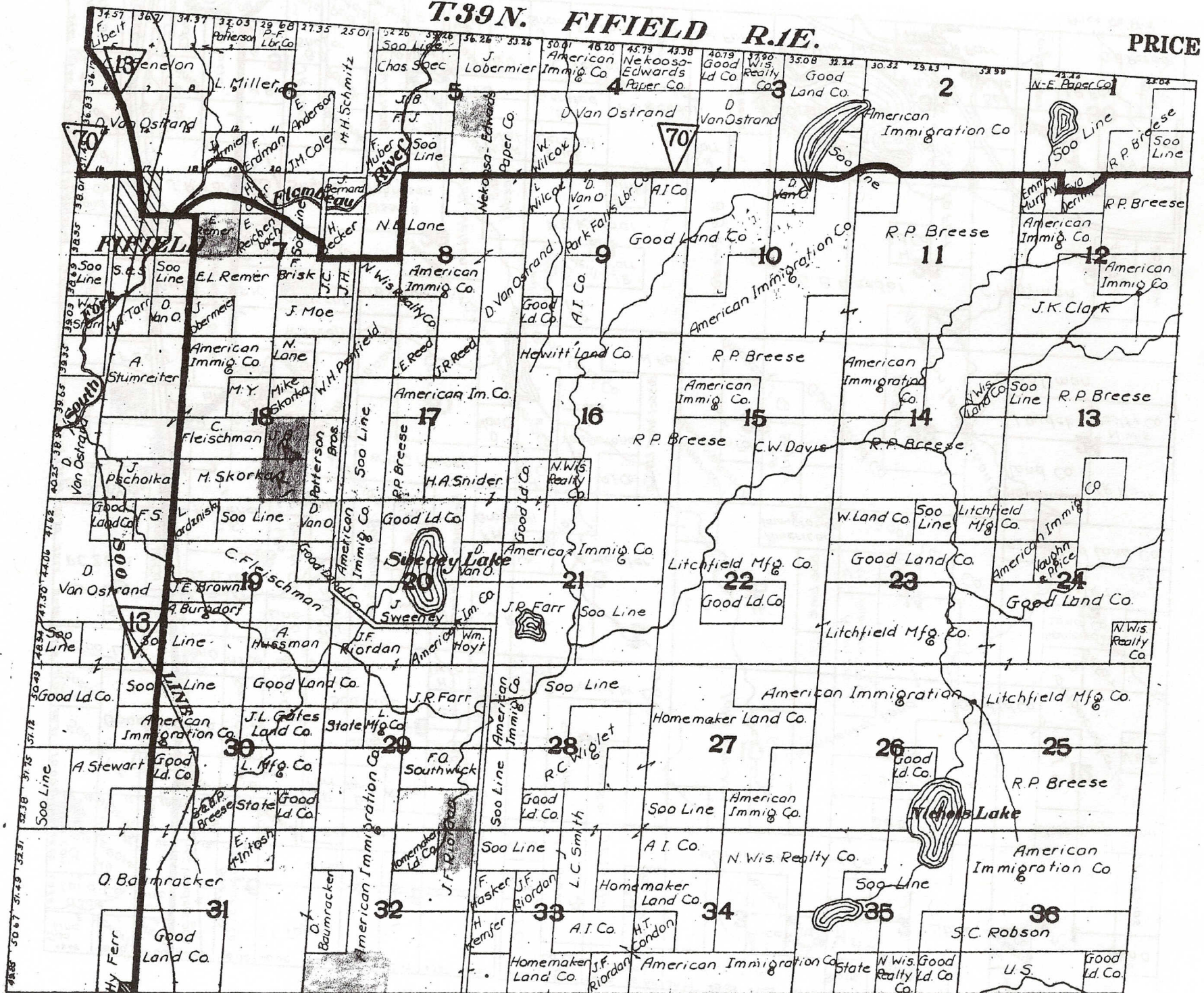


T.38N. WORCESTER R.1E.



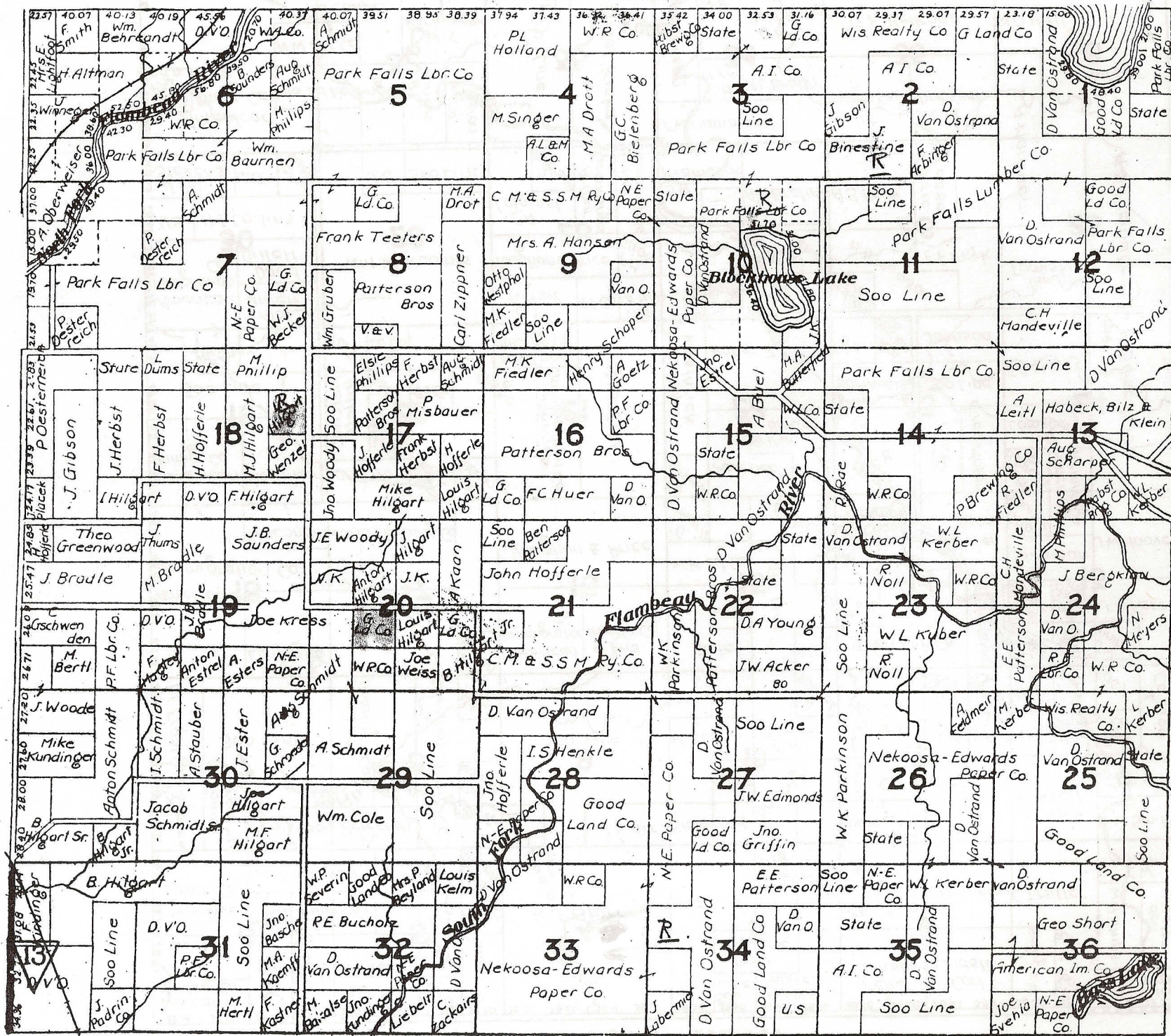
T.39N. FIFIELD R.1E.

PRICE

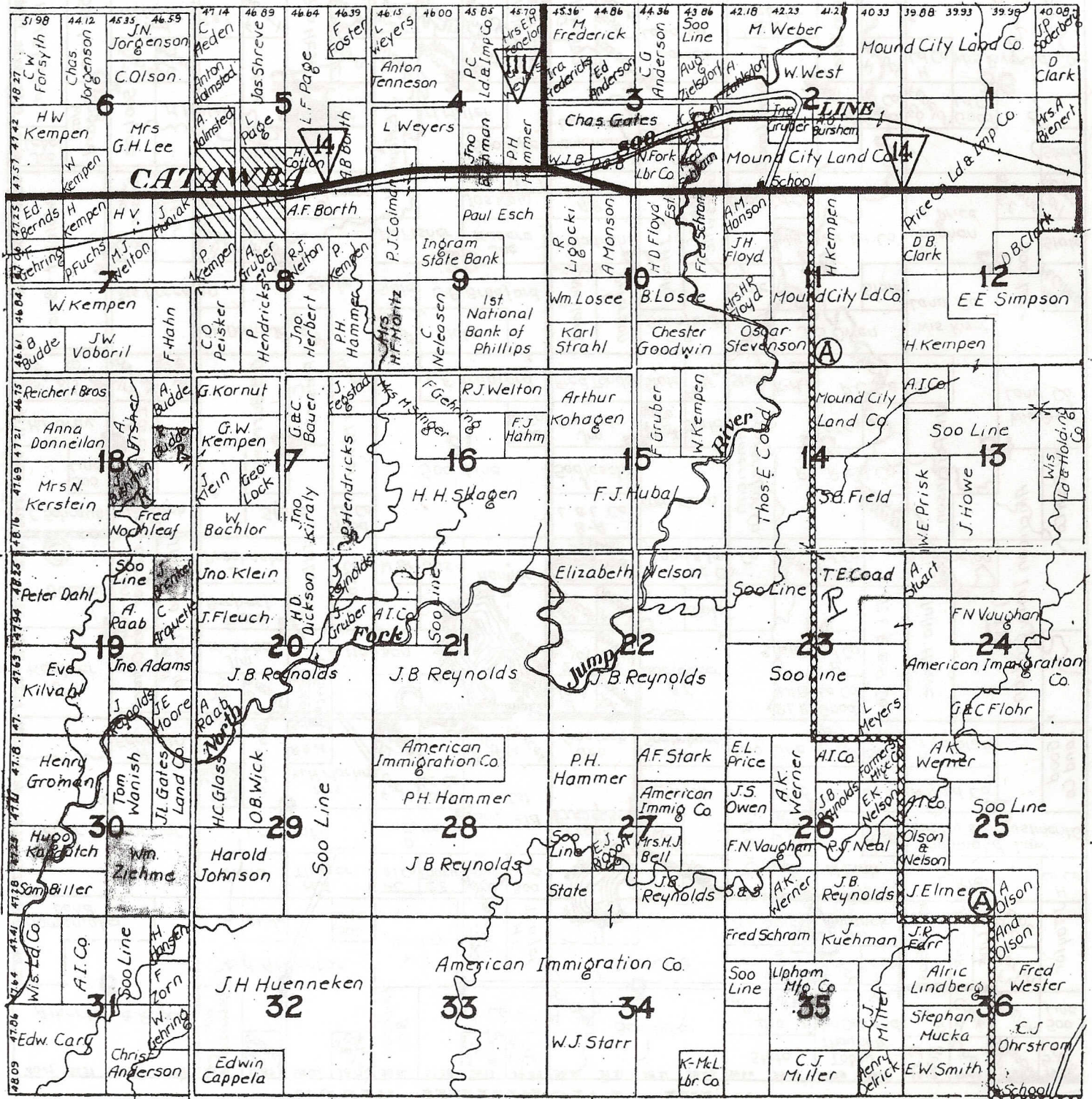


Price Co Wis

T. 40 N. R. 1 E.



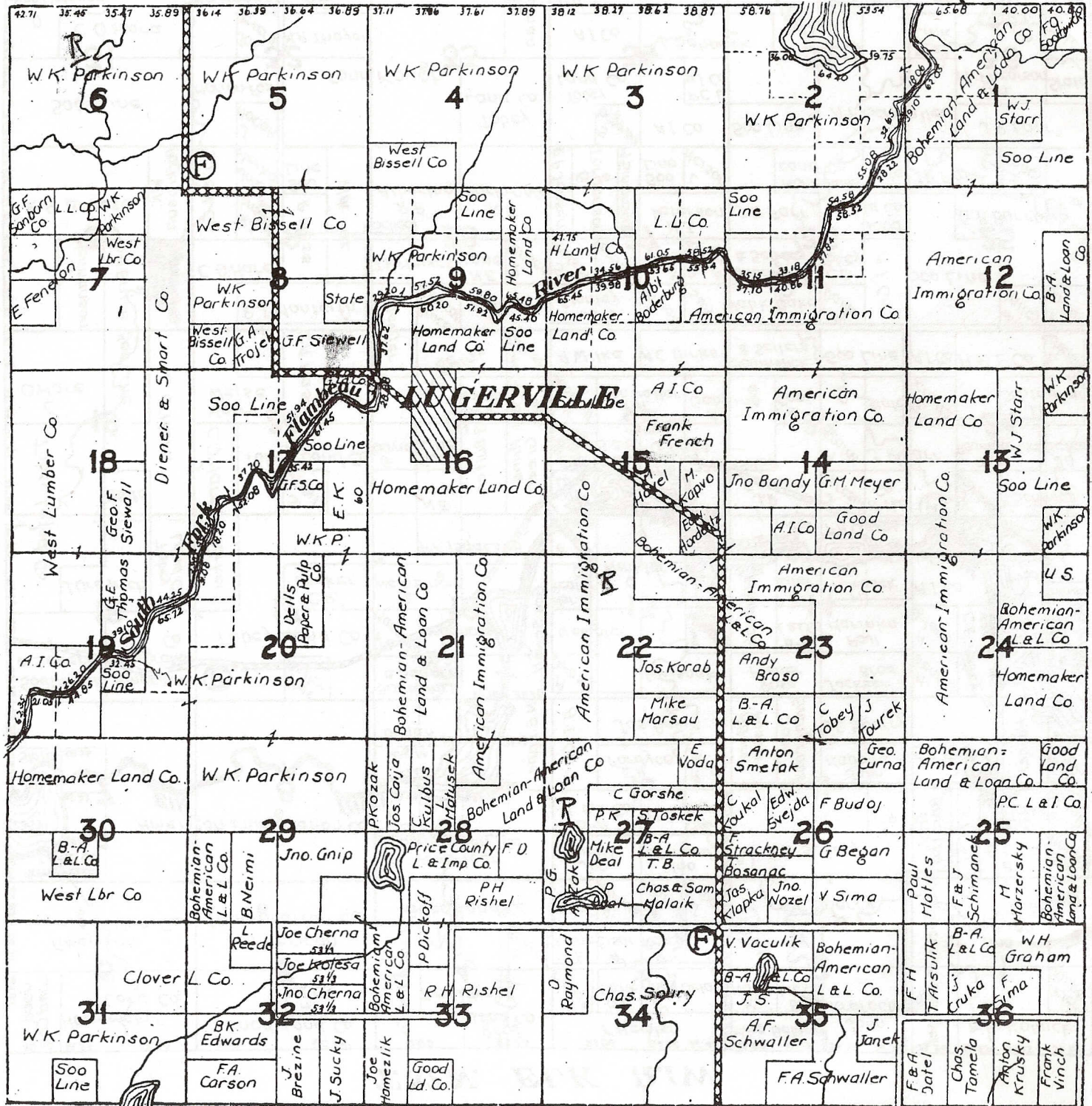
T.35N. CATAWBA R.1W.



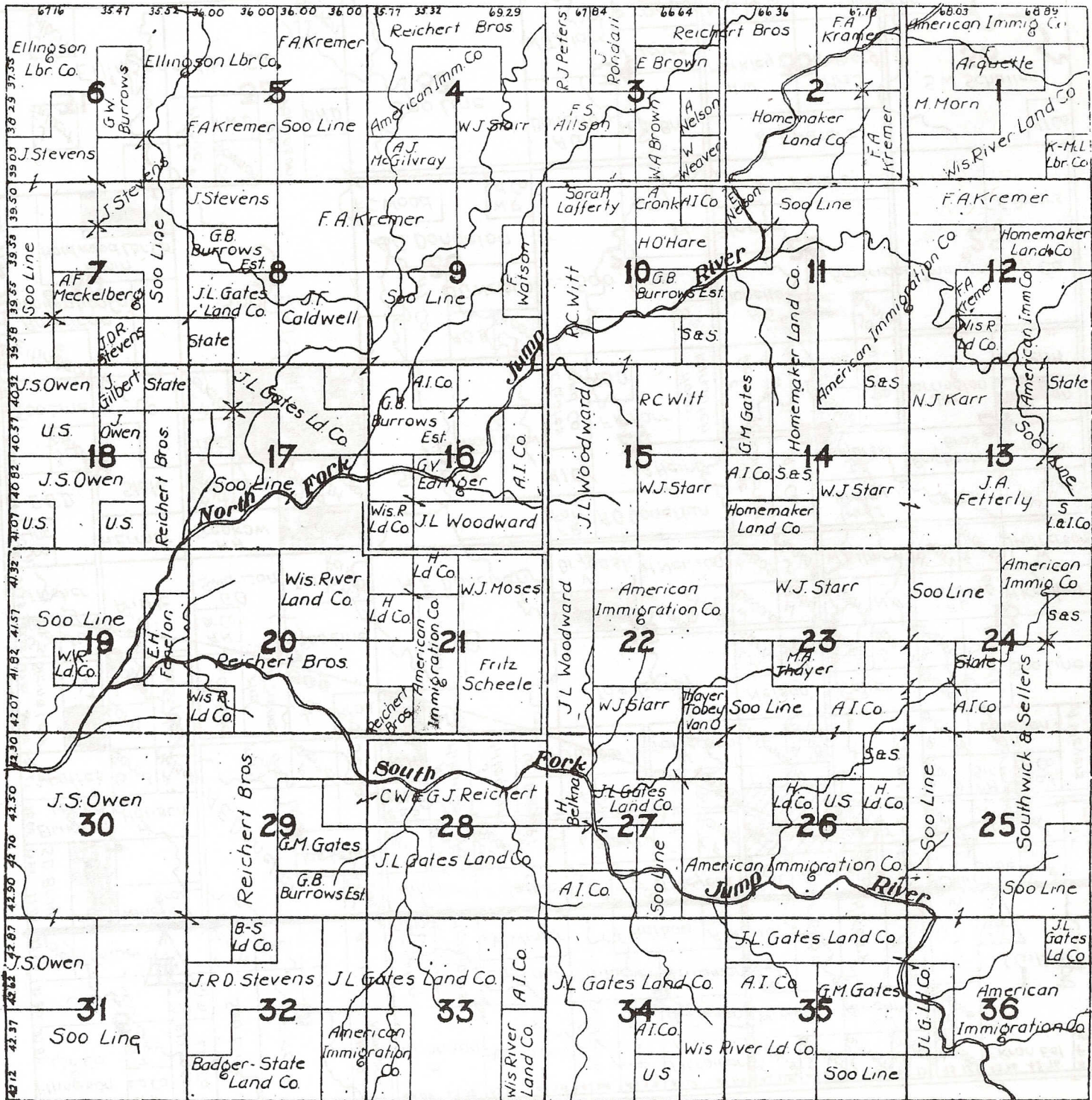
T.38N.

FLAMBEAU

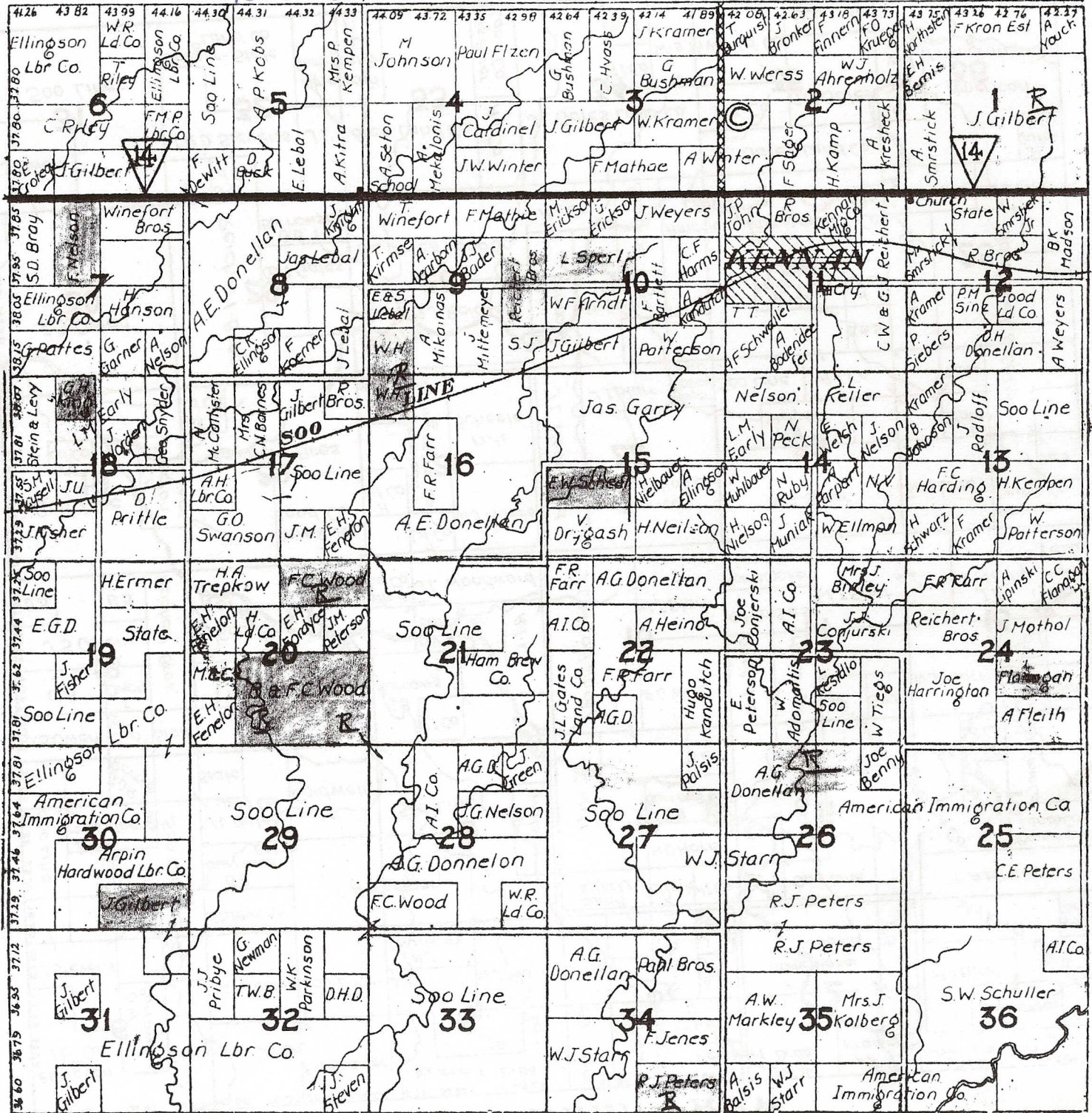
R.1W.



T.34N. KENNAN R.2W.

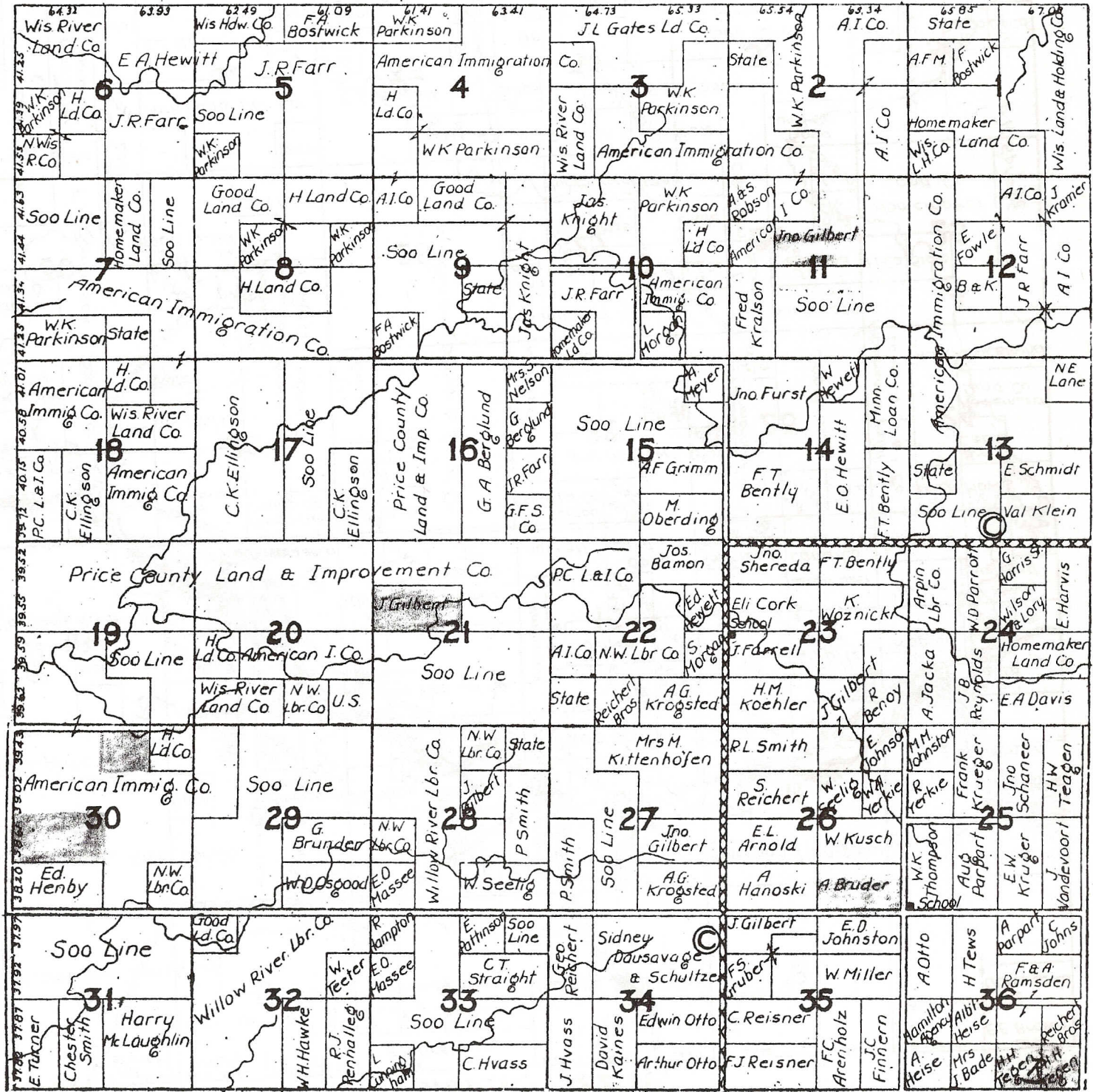


T35N ~~103W~~ KENNAN R.2W.

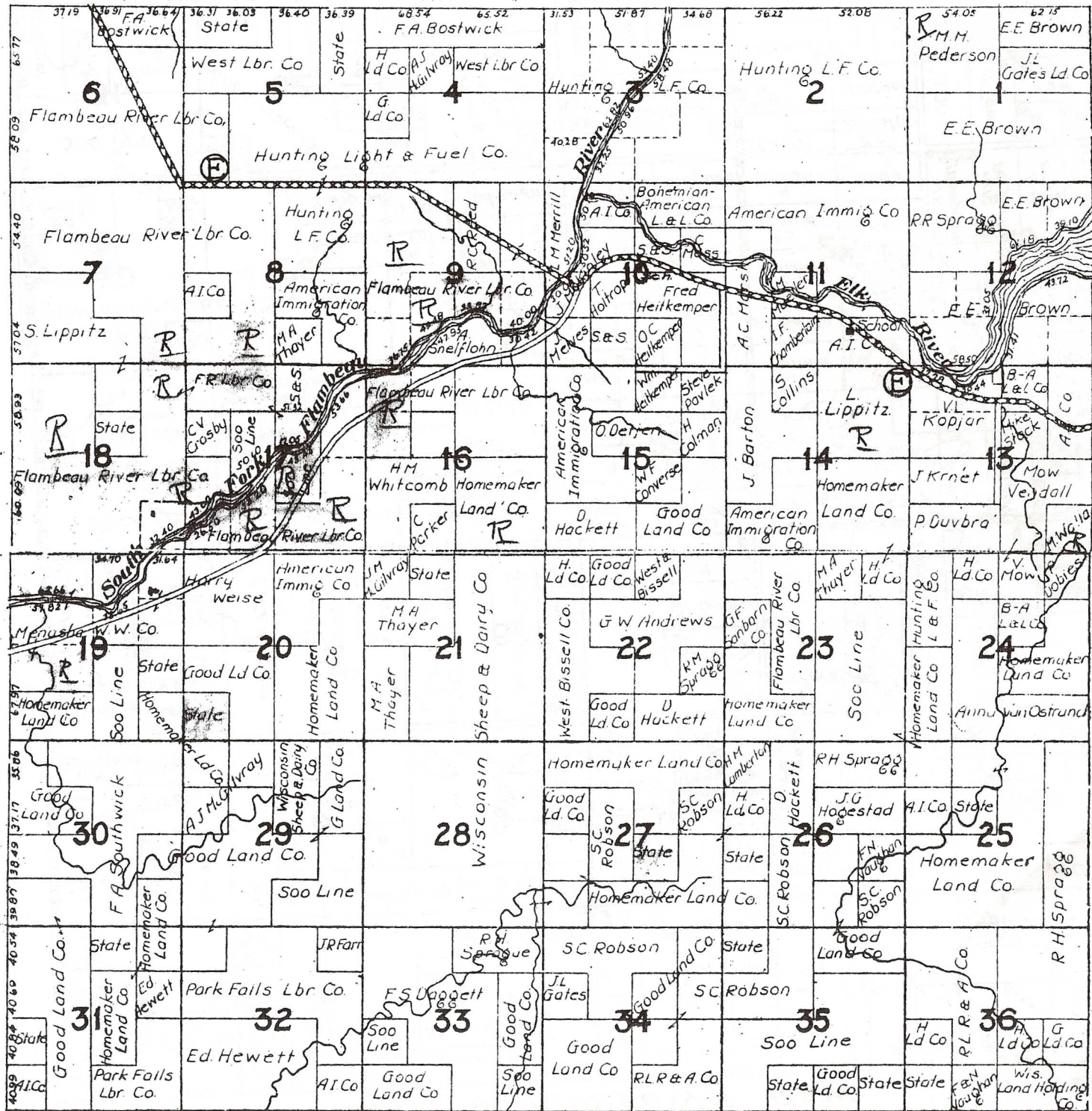


T.36N. GEORGETOWN R.2W.

PRICE

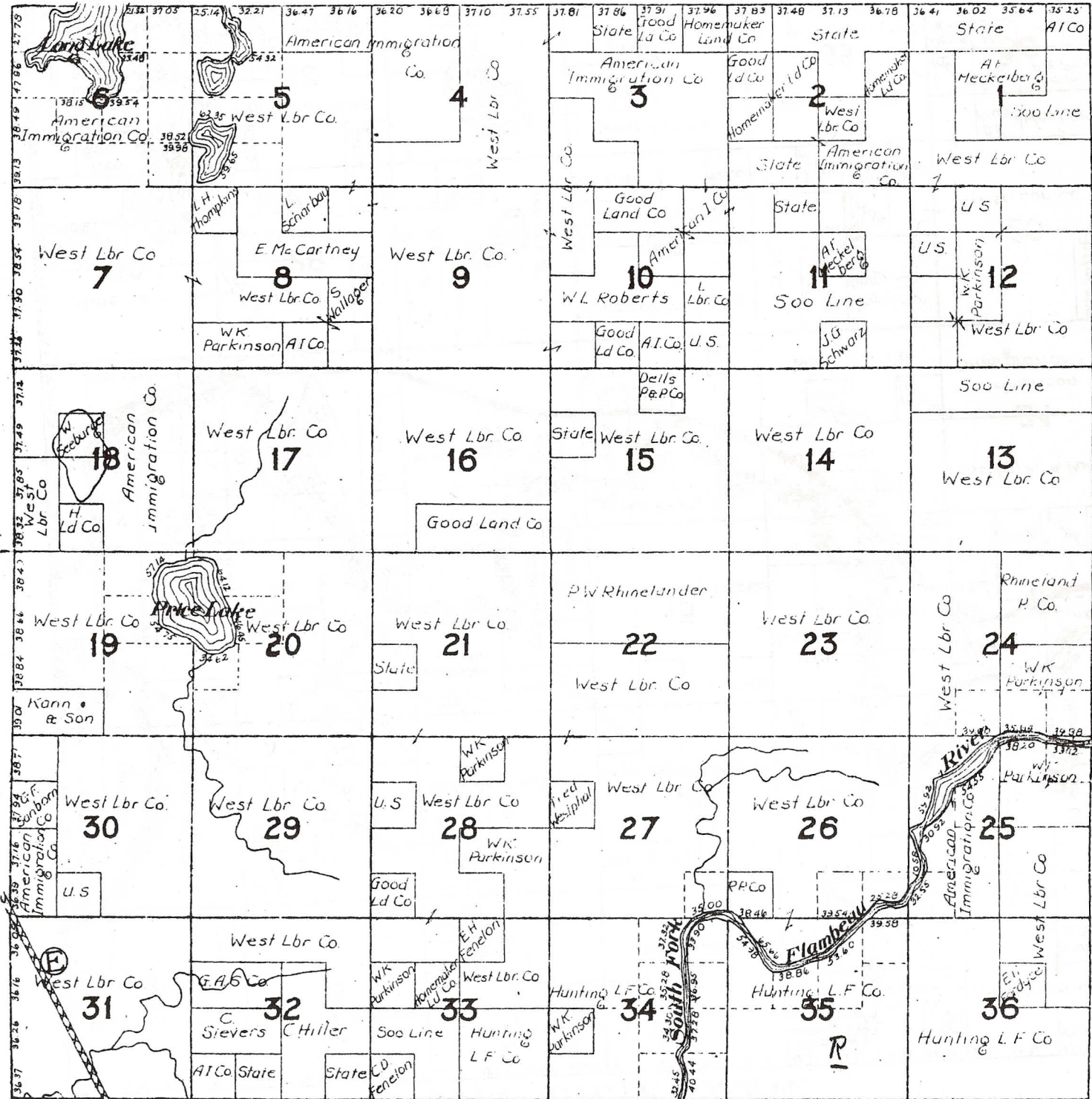


T.37N. R.2W.

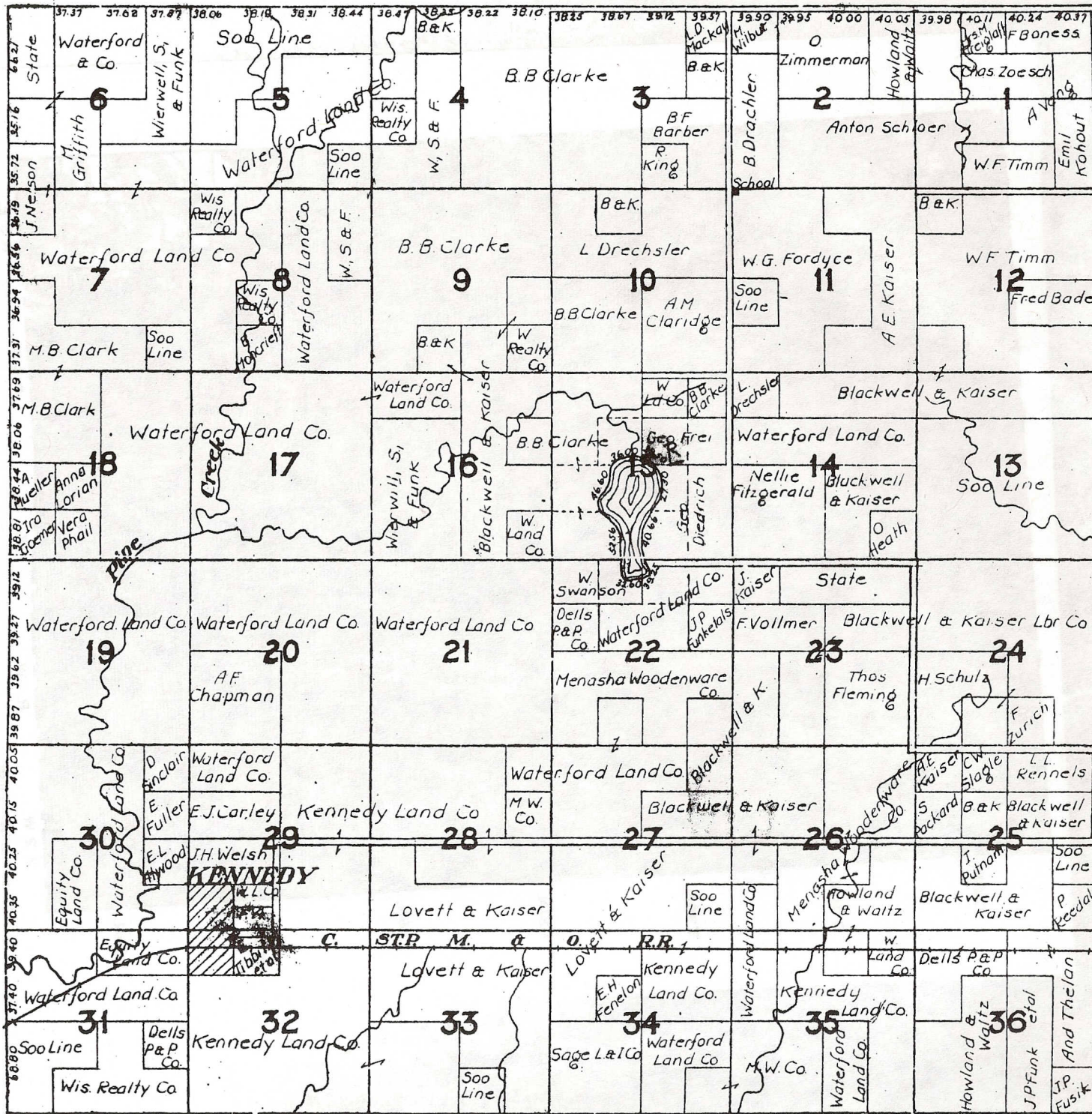


T.38 N.

R.2 W.



T. 40 N. LAKE R. 2 W.





- | | | | | |
|--|--|---|------------------------------------|---------------------------------|
| 1L
Sand (level) | 2
Light sandy loam (undulating) | 2L
Light sandy loam (level) | 3
Heavy sandy loam (undulating) | 3L
Heavy sandy loam (level) |
| 4
Silt loam with well-drained subsoil (rolling) | 5
Silt loam with well-drained subsoil (level) | 6
Silt loam with tight subsoil (level) | 7
Poorly drained sandy soil. | 8
Heavy poorly drained soils |
| 9
Peat and muck | 10
Rough or very stony sandy soil | 11
Rough or very stony heavy soil | | |