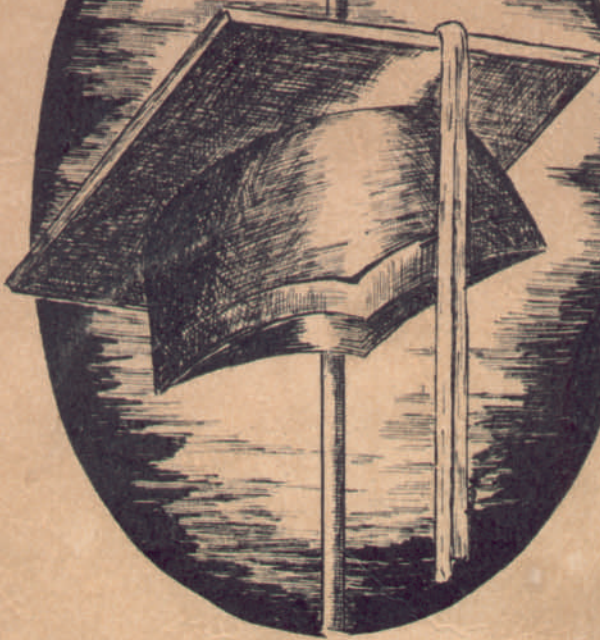


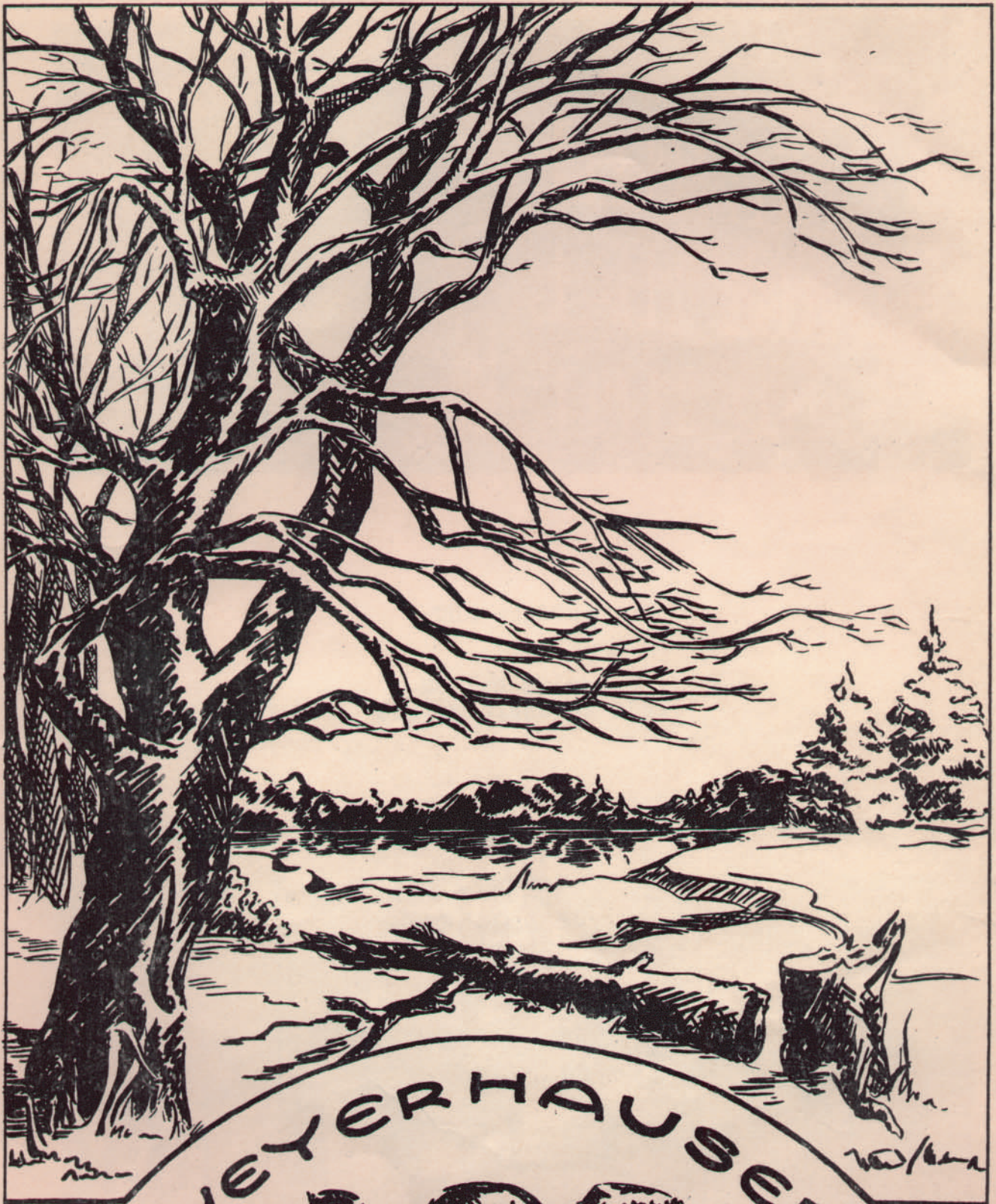
1951



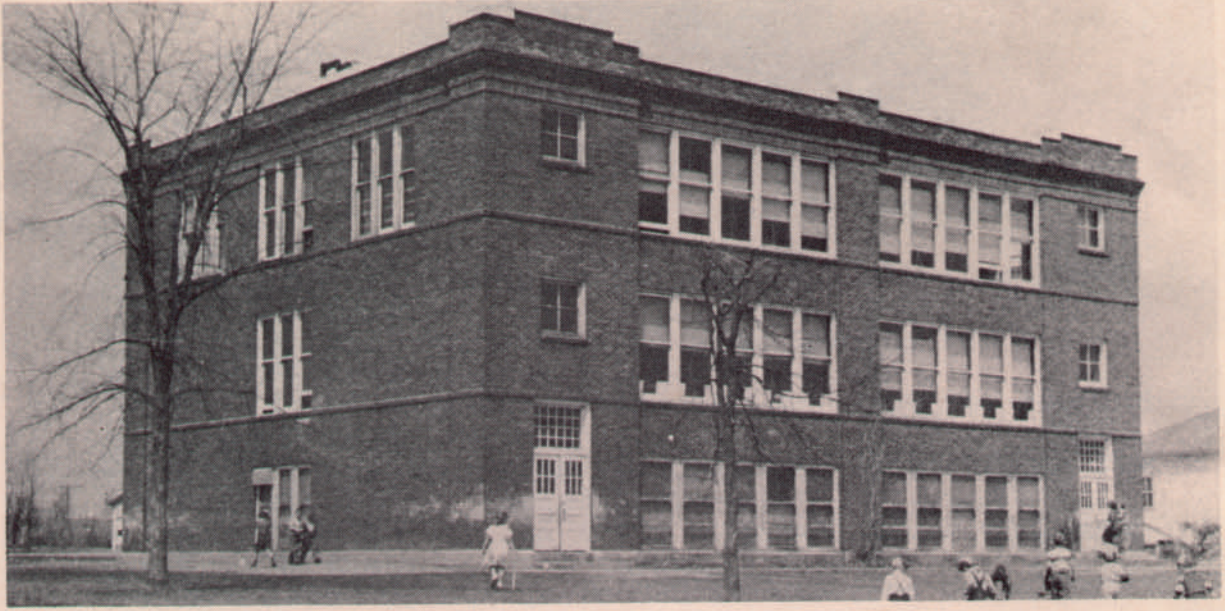
THE LOG





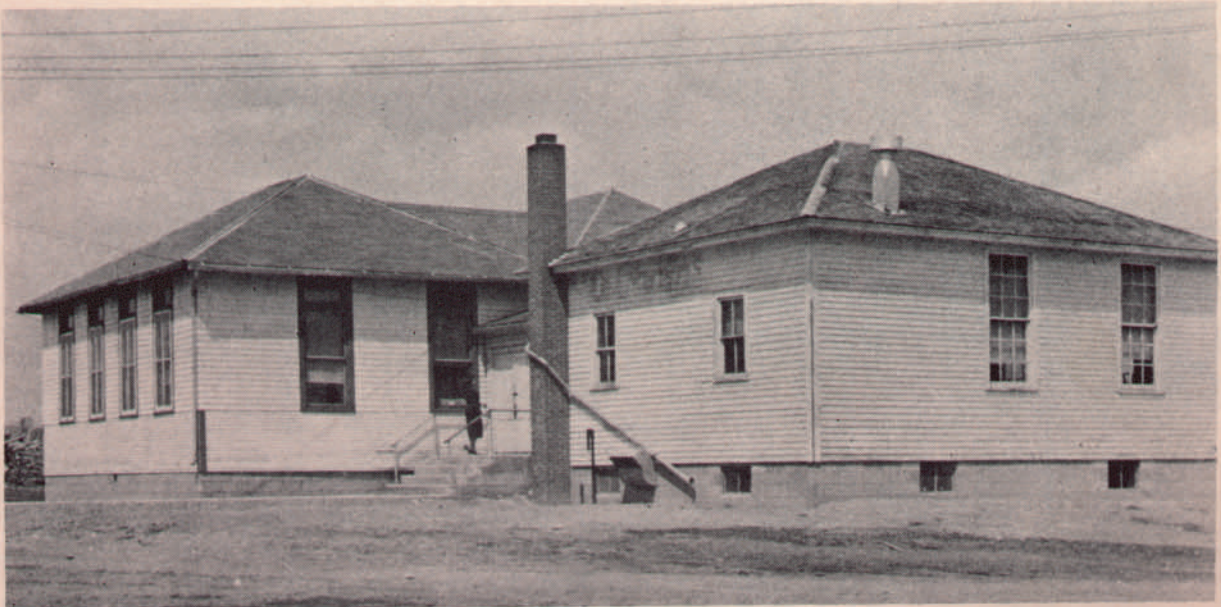


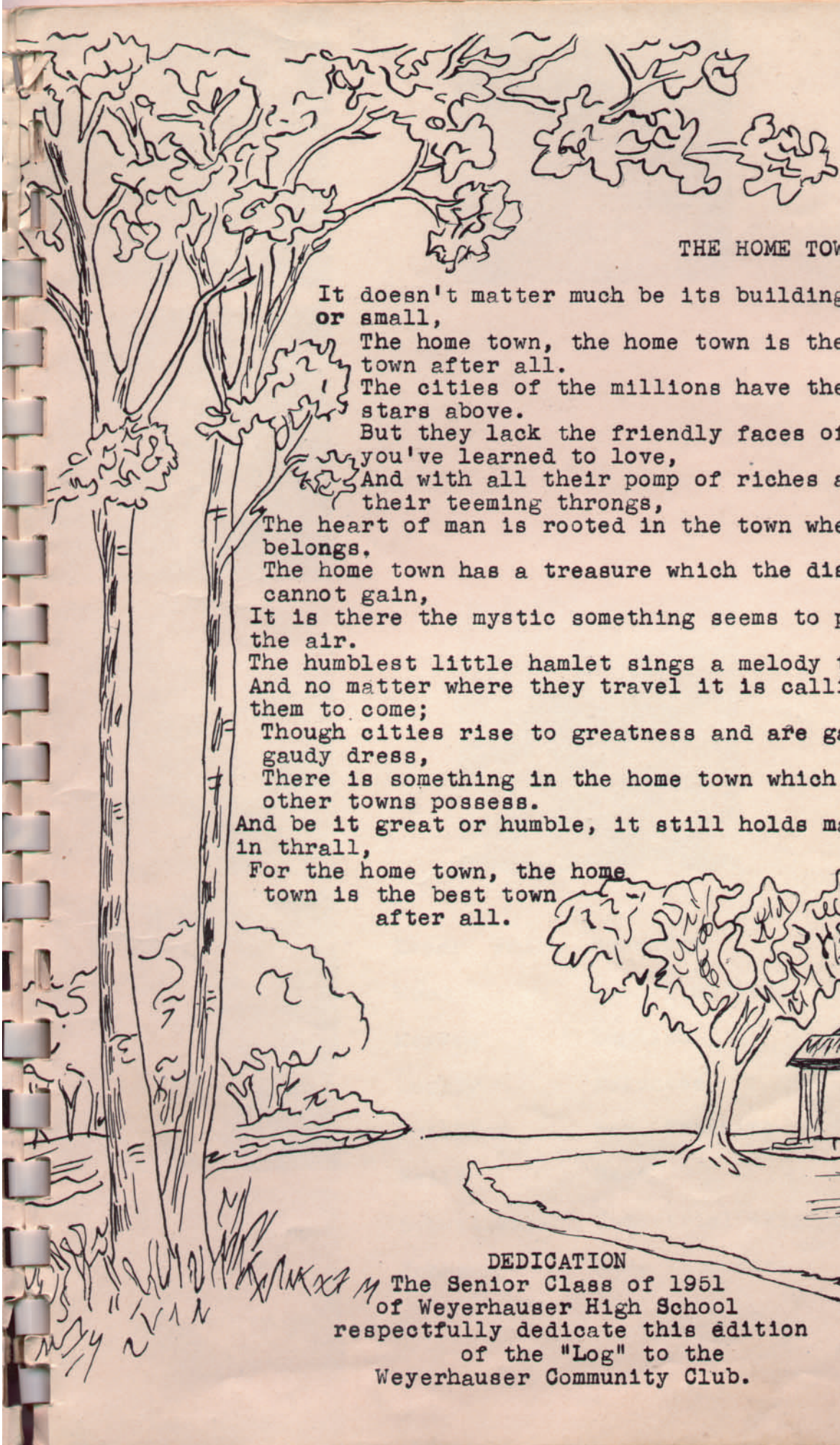
WEYERHAUSER
THE LOG 1951



OUR SCHOOL

Edited by the
Senior Class of 1951





THE HOME TOWN

It doesn't matter much be its buildings great
or small,

The home town, the home town is the best
town after all.

The cities of the millions have the sun and
stars above.

But they lack the friendly faces of the few
you've learned to love,

And with all their pomp of riches and with
their teeming throngs,

The heart of man is rooted in the town where he
belongs.

The home town has a treasure which the distance
cannot gain,

It is there the mystic something seems to permeate
the air.

The humblest little hamlet sings a melody to some,
And no matter where they travel it is calling

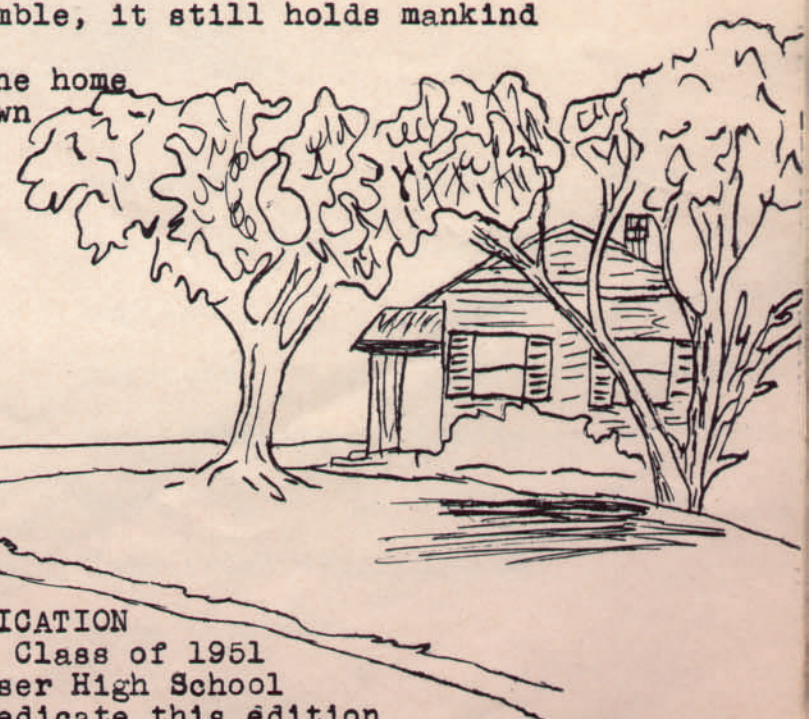
them to come;

Though cities rise to greatness and are gay with
gaudy dress,

There is something in the home town which no
other towns possess.

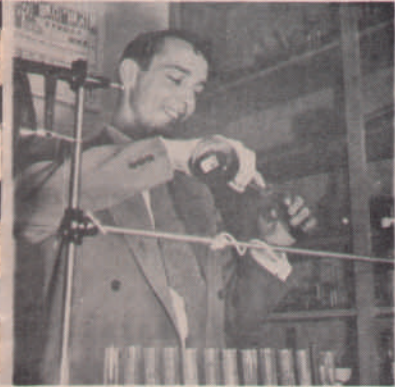
And be it great or humble, it still holds mankind
in thrall,

For the home town, the home
town is the best town
after all.



DEDICATION

The Senior Class of 1951
of Weyerhauser High School
respectfully dedicate this edition
of the "Log" to the
Weyerhauser Community Club.



| | | | |
|---------------|-----------------|-----------|-----------|
| Heuer, Prin. | Geometry | Algebra | Physics |
| Wood | Social Studies | History | Phy. Ed. |
| Meyers | English | Library | Speech |
| Lepley | Sciences | Chemistry | Athletics |
| Phillips | Sec. Training | Typing | Shorthand |
| Wells | Band | Chorus | Music |
| Schwellenbach | Industrial Arts | Crafts | |
| Johnson | Home Economics | | |



JOYCE ANDERSON

"Intelligent, pleasant mannered, friendly; an all-around girl."

- | | |
|-------------------|--------------------------|
| Vice-President--2 | Band-----2-3-4 |
| Stu. Coun. Sec.-4 | Orchestra-----4 |
| Secretary-----1-4 | Glee Club-----1-2-3-4 |
| Cheerleader---2-3 | Minstrel Show-----2-3-4 |
| Class Play-----3 | Folk Dancing-----1 |
| Annual Staff----1 | Homecoming Attendant-3-4 |
| Annual Editor---4 | |

ALFRED BENIK

"Mr. Sports." School work is an extra-curricular activity for "Dutch."

- | | |
|--------------------|------------------------|
| President-----1 | Track-----3 |
| Student Council--4 | Minstrel Show---2-3-4 |
| Basketball-1-2-3-4 | Football Co-Captain--4 |
| Baseball---1-2-3-4 | H-coming Attendant-3-4 |
| Football-----2-3-4 | |



CAROL CZEKALSKI

"Efficient, loyal, hard working." An asset to any progressive group.

- | | |
|------------------|---------------------|
| Secretary-----3 | Glee Club---1-2-3-4 |
| Class Play-----3 | Minstrel Show-2-3-4 |
| Annual Staff-2-3 | Folk Dancing-----1 |
| Annual Editor--4 | F. H. A.-----3-4 |
| Band-----2-3-4 | F. H. A. Pres.----4 |
| Orchestra---3-4 | Prom Queen-----3 |



DOLORES DANIELS

Shy, but not timid. Would make anyone a perfect "private" secretary.

- | | |
|---------------------|----------------|
| Band-----2-3-4 | Folk Dancing-1 |
| Orchestra-----3-4 | F. H. A.-----3 |
| Glee Club---1-2-3-4 | |
| Minstrel Show-2-3-4 | |





RAYMOND GARBACZ

"The F. B. I. has nothing on Toby.
Promises to own the most prosperous farm
in the Northwest."

- | | |
|-------------------|----------------------|
| Vice President--3 | Track-----3-4 |
| Basketball Mgr.-4 | Minstrel Show----3-4 |
| Football-----4 | Prom King-----3 |
| Class Play-----3 | |

GLEN HANSON

"Easy going, carefree. Stretch will never
let himself have a worry in the world."

- | | |
|----------------------|--------------------|
| Basketball---1-2-3-4 | Track-----4 |
| Baseball----1-2-3-4 | Minstrel Show----4 |
| Football-----2-3 | |



HAROLD HANSON

"Heavy's always good for a laugh.
Promises to be a second Guy Lombardo."

- | | |
|--------------------|-----------------------|
| Treasurer-----2 | Band-----2-3-4 |
| Stu. Coun. Pres.-4 | Orchestra-----3-4 |
| Basketball-----3-4 | H. Coming Attendant-3 |
| Baseball-----3-4 | Prom Prince-----3 |
| Football-----2-3-4 | Minstrel Show--2-3-4 |
| Class Play-----3 | |

LENORA JESSICK

"A quiet sense of humor. Lenora believes
in the policy of few friends, but true
ones."

- | | |
|---------------------|--------------------|
| Band-----2-3 | Folk Dancing-----1 |
| Glee Club---1-2-3-4 | F. H. A.-----3 |
| Minstrel Show-2-3-4 | |





ANNA KAMINSKI

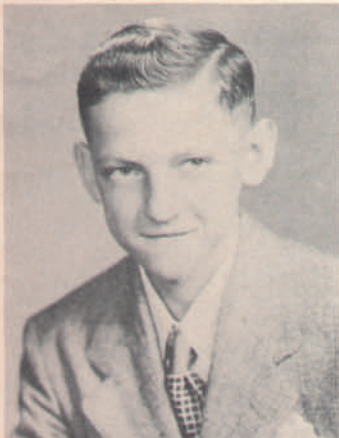
Ann is efficient and loyal. It is our hope that she will be our nurse if we ever need one.

| | |
|---------------------|--------------------|
| Class Play-----3 | Folk Dancing-----1 |
| Majorette-----2-3-4 | F. H. A.-----3-4 |
| Glee Club---1-2-3-4 | Annual Staff-----4 |
| Minstrel Show-2-3-4 | |

ROSE KAMINSKI

"A good sense of humor; "Rosa" can take a lot of personal kidding."

| | |
|---------------------|----------------------|
| Majorette-----2-3-4 | Minstrel Show--2-3-4 |
| Glee Club---1-2-3-4 | Folk Dancing-----1 |



THOMAS KAMINSKI

"Will best be remembered by his voice. Tommy will never see an unhappy day in his life."

| | |
|---------------------|-----------------------|
| Football Manager--4 | Minstrel Show---2-3-4 |
| Class Play-----3 | |

JOANNE KOLEK

"A little bundle of inertia. Short, but (sweet?). Plays a licorice stick in the band."

| | |
|---------------------|----------------------|
| Cheerleader-----2-3 | Minstrel Show--2-3-4 |
| Forensics-----1-2-3 | Folk Dancing-----1 |
| Band-----2-3-4 | F. H. A.-----3-4 |
| Orchestra-----3-4 | F. H. A. Sec.-----4 |
| Glee Club---1-2-3-4 | Prom Princess-----3 |





GERALDINE KOPRAS

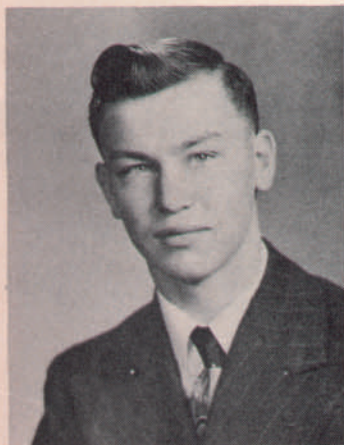
"Friendly, never without a smile;
pleasant to have around. ^{and} ~~and~~ ^{Homels}

Class President----3 Minstrel Show-2-3-4
Majorette-----2-3-4 Folk Dancing-----1
Glee Club----1-2-3-4 F. H. A.-----3-4

EDWARD LUDWIKOWSKI

"Big Ed" Friendly, courteous, hard
working. A good football player and
a true friend.

Baseball-----4 Class Play-----3
Football----2-3-4 Minstrel Show---2-4



EDWARD NELSON

(Hot Rod) Nelson ~~He~~ "Musty" promises to own
a chain of garages in later life all
stocked with "32" model cars.

Basketball-----3-4 Track-----3
Baseball-----3-4 Band-----2-3
Football-----3-4 Minstrel Show---2-3-4

EDWARD OSIECKI

"Trapper" Ed has worked fairly hard in
school but he surely hasn't missed out
on fun.

Baseball-----4 Track-----3-4
Football-----3-4





DOROTHEA PIEPER

"Blushes very coyly. Many outside interests."

| | |
|---------------------|----------------|
| Treasurer-----1 | Folk Dancing-1 |
| Glee Club---1-2-3-4 | F. H. A.---3-4 |
| Minstrel Show-2-3-4 | |

ROBERT POPLAWSKI

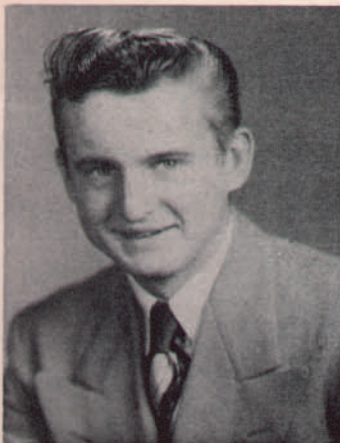
Weyerhauser's "fair-haired boy." "Lover" is not exactly the term that would fit Bob, but it wouldn't be far off.

| | |
|--------------------|-------------------|
| President-----1 | Track-----3-4 |
| Basketball-1-2-3-4 | Annual Staff----4 |
| Baseball-----3-4 | Minstrel Show-3-4 |
| Football-----3-4 | Homecoming King-4 |



Twin

Twin



STANLEY POPLAWSKI

"Scientist." Stosh prefers blonds on the theory that where there's light there's heat.

| | |
|--------------------|----------------------|
| President-----4 | Track-----3 |
| Student Council--4 | Class Play-----3 |
| Basketball-1-2-3-4 | Band-----3-4 |
| Baseball-----2-3-4 | Minstrel Show--2-3-4 |
| Football-----2-3-4 | H-coming Attendant-4 |

ALICE ROMANOWSKI

"Honest, shy and friendly. If the world were made up of Alice's what a friendly, hard working world we'd have."

| | |
|----------------------|--------------------|
| Glee Club----1-2-3-4 | Folk Dancing-----1 |
| Minstrel Show--2-3-4 | F. H. A.-----3-4 |





IRENE SHIPSHOCK

"There's more to Irene than meets the eye. She's happy at whatever she's doing."

| | |
|--------------------|----------------------|
| Class Play-----3 | Minstrel Show--2-3-4 |
| Annual Staff-----4 | Folk Dancing-----1 |
| Majorette----2-3-4 | F. H. A.-----3-4 |
| Glee Club--1-2-3-4 | |

RITA SHIPSHOCK

"Neat, efficient, courteous and clever. WHS's idea of a perfect stenographer."

| | |
|-----------------------|-------------------|
| Class Secretary-----2 | Folk Dancing----1 |
| Forensics-----2 | F. H. A.-----3-4 |
| Glee Club-----1-2-3-4 | Prom Princess---2 |
| Minstrel Show-----2-3 | |



DELBERT THOMAS

"Claims he's not an egomaniac. The girls follow me around for the gems of wisdom I bestow so freely."

| | |
|-----------------------|--------------------|
| Class Vice Pres.----4 | Track-----3-4 |
| Student Council----4 | Minstrel Show--3-4 |
| Basketball---1-2-3-4 | H-coming Att.----4 |
| Baseball-----1-2-3-4 | Football Co-Capt-4 |
| Football-----2-3-4 | |

AGNES TOMCZAK

"Calm, cool, collected. Aggie is always willing to be of assistance."

| | |
|----------------------|-------------------|
| Glee Club-----2-3-4 | Folk Dancing----1 |
| Minstrel Show--2-3-4 | F. H. A.-----3 |





MARILYN VORCE

"Sportswoman" A lover of the out-of-doors. Intelligent, witty, friendly and aggressive.

- Class Play-----3
- Annual Staff-----3
- Band-----2-3-4
- Orchestra-----4
- Glee Club-----1-2-3-4
- Minstrel Show---2-3-4
- Folk Dancing-----1

CHRISTINA WALICKI

"Tina has a variety of talents; all acceptable."

- Class Play-----3
- Band-----2-3-4
- Orchestra-----3-4
- Glee Club-----2-3-4
- Minstrel Show---2-3-4
- Folk Dancing-----1
- F. H. A.-----3



DOROTHY ZAHORSKI

"Miss Light Foot" Knows what she wants and she'll get him.



- Treasurer-----3-4
- S. Council-----4
- Cheerleader---3-4
- Forensics---2-3-4
- Class Play-----3
- Majorette---2-3-4
- Glee Club-----1-2-3-4
- Minstrel Show---2-3-4
- Folk Dancing-----1
- F. H. A.-----3-4
- H. Coming Atndt.-3-4

LAWRENCE ZARECKI

"Itchy would be our vote as a future politician. Leads sort of a Don Juan existence." (In neighboring towns.)

- Football Mgr.-----4
- Class Play-----3
- Minstrel Show---4



MOTTO: SUCCESS COMES ONLY TO THOSE WHO STRIVE

COLOR: BLUE AND WHITE

FLOWER: RED ROSE

SENIOR CLASS HISTORY

In the fall of 1947, thirty-seven eager freshmen began a new chapter in their lives when they enrolled in Weyerhauser High on September 2. The Sophomores frightened us a little when they initiated us on September 26. We returned the party October 16. We ended an exciting first year with a picnic at the Tourist Park in Rice Lake.

The fall of 1948 found us with an enrollment of thirty-five. On September 23 we had our chance to initiate the freshmen and on November 1 they honored us with a return party. We ended an enjoyable year with a picnic at Cornell. One of our classmates, Joyce Ancerson, was a cheerleader.

The fall of 1949 found us back as upper classmen. The first big event of the year was our class play "The Baby Sitter", presented on November 29. The second big event was our Junior Prom on May 10. The theme was "Somewhere Over the Rainbow" with the Lou-Tones from Minneapolis as our orchestra. Ray Garbacz and Carol Czekalski were King and Queen and Harold Hanson and Joanne Kolek were Prince and Princess. Joyce Anderson, Joanne Kolek, and Dorothy Zahorski were cheerleaders. Joyce and Dorothy were also Homecoming Attendants. We ended an exciting year with a picnic on the school grounds.

In the fall of 1950, we found ourselves Seniors, and our enrollment twenty-eight. We had a lot of special events scheduled, the first being the Homecoming on September 29. Betty Tatur was elected Queen and Bob Poplawski was King. Dorothy Zahorski and Joyce Anderson were the attendants from our class. Dorothy was also a cheerleader. On October 10 we had our class pictures taken at DuBois Studios and we received them a few weeks later. We received our class rings on January 8, after waiting anxiously for them. Another big adventure for us was our trip to Eau Claire for Senior Day activities at the College on March 2. We all learned something and found out what it's like to be caught in a blizzard. Another big event was our class play "Grandma's Best Years", given on April 27. The Seniors of '51 had a big part in the first Student Council of WHS. The President, Harold Hanson, and the Secretary, Joyce Anderson and four other members were from our class.

| | Freshman | Sophomore | Junior | Senior |
|----------|-------------|-----------|------------|------------|
| Pres. | Dutch B. | Bob P. | Gerry K. | Stosh P. |
| V. Pres. | James P. | Joyce A. | Ray G. | Del T. |
| Sec. | Joyce A. | Rita S. | Carol C. | Joyce A. |
| Treas. | Dorothea P. | Harold H. | Dorothy Z. | Dorothy Z. |
| Advisor | Mrs. Thomas | Mr. Heuer | Mr. Wood | Mr. Heuer |



JUNIOR CLASS

B.R.-I. Szleszinski, A. Kotulski, V. Severson, Advisor Mr. Wood,
 J. Benik, L. Delano, A. Zarecki
 M.R.-R. Tupy, L. Mechalski, L. Traczyk, J. Preston, R. Vobernik
 L. Anderson, B. Pieper
 F.R.-F. Cabanowski, N. Romanowski, G. Jessick, C. Ridout,
 D. Thull, B. Tatur, C. Jasicki

On August 30, 1948, twenty-two green freshmen entered the doors of W. H. S. We were initiated by the Sophomores on September 23 and in November we gave them a return party.

On August 29, 1949, we returned to WHS with all our twenty two members present. Early in November Daniel Kozlowski joined us. We initiated the freshmen on September 15. They returned the party on October 7.

The year of 1950 found us back at WHS as upper classmen. Our enrollment had dropped to nineteen, Doris Gutheridge, Reno Gillett, and Daniel Kozlowski having left us. Ruth Tupy joined our class. Betty Tatur was named Home Coming Queen. Janis Preston and Lois Anderson served as Attendants.

Our present officers are:

President.....Clara Mae Jasicki
 V. President.....Janis Preston
 Secretary.....Ruth Vobernik
 Treasurer.....Jim Benik
 Advisor.....Mr. Wood



SOPHOMORE CLASS

B.R.-W. Noha, G. Romanowski, S. Swenson, A. Nelson, J. Preston,
 R. Thomas, S. Zahorski, G. Daniels, T. Mackey
 M.R.-M. Johnson, A. Karpowicz, F. Buric, D. Swiercz, D. Bemis,
 E. Thull, M. Vetterkind, B. Novak, C. Kopras, M. Noha
 F.R.-S. Kryzaniak, A. Mujwid, J. Kendzior, G. Tomczak,
 D. Wutkiewicz, L. Mujwid, M. Vorce, O. Belano,
 F. Szleszinski, Advisor, Mr. Schwellanbach

On August 29, 1949 thirty-two green freshmen were beginning their first year of highschool at WHS.

We were initiated by the Sophomores on September 15th and returned their party on October 7, 1949. We held our first meeting and elected our officers.

We started our Sophomore year August 28, 1950. Four of our classmates failed to return. They were Raymond Osiecki, John Joswiak, Eleanor Draus, and Joyce Young. Months later Mae Vetterkind joined us. This left us with an enrollment of twenty-nine.

On September 20, 1950 we initiated the freshmen. They returned the party a few weeks later.

Our present officers are:

President.....Jim Kendzior
 V. President.....Roxie Thomas
 Secretary.....Dorothy Swiercz
 Treasurer.....Shirley Zahorski
 Advisor.....Mr. Schwellanbach



FRESHMAN CLASS

B.R.-T. Dziemiela, E. Kramer, R. Zarecki, F. Ludwikowski,
 B. Koehler, Mr. Meyers Adviser, J. Palaski, M. Bickel,
 D. Calkins, J. Kogut, K. Gunn
 M.R.-A. Kroll, G. Hanson, D. Kolek, R. Gunn, C. Kramer,
 D. Ridout, E. Klawiter, D. Preston, C. Walicki,
 E. Kasmierkoski, W. James
 F.R.-A. Checkalski, C. Sieja, C. Tatur, G. Phillips,
 M. Anderson, E. Romanowiki, J. Lozowski, J. Michalski,
 P. Mujwid, J. Baxter, R. Vobornik

"Some people are born great, some have greatness thrust upon them, and some achieve greatness." The last of these three best refers to the Freshman class. We shall all work in the near future to achieve this greatness.

The Freshman class started high school with an enrollment of thirty-five. Carl Mortenson, Jean Wells, Loraine Benik, and Edna Peaseley left the class, but Myrna Anderson and Joyce Baxter joined making a total of thirty-three.

We were initiated by the Sophomores in September and in the evening a party was given for us in the Gymnasium with all the faculty invited. We returned the favor in October.

The following were chosen to guide us during our first year:

| | |
|---------------------|-------------------|
| President..... | Arnold Chechalski |
| Vice President..... | Donald Kolek |
| Secretary..... | Carol Tatur |
| Treasurer..... | Frank Ludwikowski |
| Advisor..... | Mr. Meyers |



STUDENT COUNCIL

B.R.-Delbert Thomas, Frank Ludwikowski, Donald Kolek, Arnold Checkalski, Jim Kendzior, Stanley Poplawski
M.R.-Carol Tatur, Shirley Zahorski, Dorothy Swiercz, Janis Preston, Alfred Benik, Clara Mae Jasicki, Ruth Vobornik
F.R.-Mr. Lepley, Betty Tatur, Harold Hanson-President, Joyce Anderson-Recording Secretary, Dorothy Zahorski, Jim Benik, Mr. Heuer

The Student Council, the student's voice in establishing policies, was inaugurated this year. The members of the Council are the four officers from each of the four classes and three delegates elected at large from the student body. The Principal of the school serves on the Council as well as one representative from the faculty who is selected by the students. The Council in its first year was called on to settle several questions relative to student government. Several policy-making decisions were reached and a few discipline cases were handled.



FHA

B.R.-G. Jessick, F. Cabanowski, L. Traczyk, D. Pieper, B. Pieper, J. Preston, C. Jasicki, R. Vobernik, B. Tatur
 M.R.-G. Romanowski, C. Ridout, S. Zahorski, D. Swiersz, E. Thull, D. Bemis, I. Shipshock, G. Koprass, R. Shipshock
 F.R.-J. Preston, R. Thomas, G. Daniels, C. Czekalski, J. Kolek
 A. Romanowski, D. Zahorski, A. Kaminski, Mrs. Johnson



FORENSICS

B.R.-D. Kolek, E. Kazmierkowski, A. Czekalski
 M.R.-Mr. Meyers, B. Pieper, S. Swenson, D. Swiersz, D. Zahorski
 C. Tatur, A. Kaminski, A. Nelson, J. Preston, J. Kogat
 F.R.-G. Phillips, J. Baxter, S. Zahorski, C. Koprass, D. Bemis
 J. Anderson, R. Thomas, R. Vobernik, M. Anderson



ANNUAL STAFF

B.R.-I. Shipshock, Mr. Heuer, B. Poplawski, A. Kaminski
 F.R.-G. Romanowski, R. Vobornik, J. Anderson, M. Vorce
 C. Czekałski, Absent P. Mujwid



LIVE WIRE STAFF

B.R.-J. Preston, A. Mujwid, D. Wutkiewicz, M. Vorce, B. Novak
 J. Kendjor, E. Thull, G. Romanowski, G. Daniels, G. Tmeczak
 S. Swenson, A. Nelson, R. Thomas, S. Kryzaniak
 F.R.-C. Koprás, Mr. Meyers, D. Swiercz, D. Bemis, S. Zahorski
 M. Vetterkind



FOOTBALL SQUAD

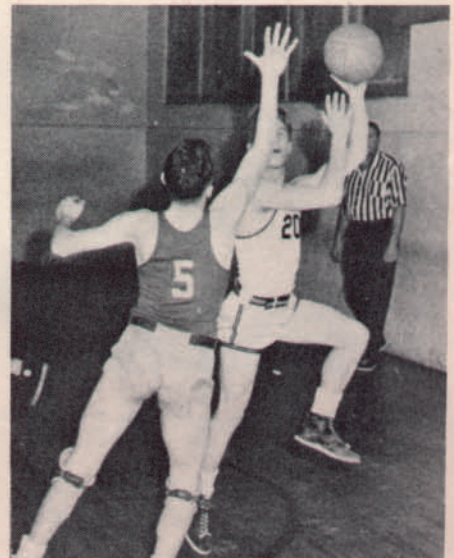
B.R.-Tommy Dziemiela, Louie Mujwid, Casper Walicke, Ed Nelson, Frank Ludwikowski, Carl Mortenson, Doug Preston, Alex Zarecki, Ed Osiecki, Raymond Garbacz, Bob Koehler, Jim Benik, Don Kolek, Gilbert Hanson, Coach B. L. Lepley
 F.R.-Managers Lowrance Zarecki-Tommy Kaminski, Vern Severson, Ed Ludwikowski, Harold Hanson, Bob Mortenson, Dutch Benik, Delbert Thomas, Stosh Poplawski, Bob Poplawski

SEASONS RECORD

| | | | |
|-------------|----|-------------|----|
| WEYERHAUSER | 2 | CAMERON | 38 |
| WEYERHAUSER | 21 | SHELL LAKE | 40 |
| WEYERHAUSER | 8 | CLEAR LAKE | 19 |
| WEYERHAUSER | 13 | CHETEK | 26 |
| WEYERHAUSER | 6 | BRUCE | 6 |
| WEYERHAUSER | 19 | PRAIRE FARM | 14 |
| WEYERHAUSER | 52 | NEW AUBURN | 6 |



SPORT
SNAPS





"A" Team Cheerleaders

Betty Tatur Janis Preston
Dorothy Zahorski Roxie Thomas



"B" Team Cheerleaders

Janet Preston
Shirley Swenson
Evelyn Romanowski



Junior High Cheerleaders

Joan Tatur
Pat Phillips
Betty Lou Buric
Marcella Mujwid



BASKETBALL SQUAD

B.R.-Coach Bernal Lepley, Don Kolek, Doug Preston, Vernon Severson, Bob Koehler, Harold Hanson, Mgr. Ray Garbacz
 F.R.-Stosh Poplawski, Bob Poplawski, Glenn Hanson, Delbert Thomas

SEASONS RECORD

| | | | |
|-------------|----|--------------|----|
| WEYERHAUSER | 41 | BIRCHWOOD | 29 |
| WEYERHAUSER | 26 | NEW AUBURN | 36 |
| WEYERHAUSER | 27 | CORNELL | 57 |
| WEYERHAUSER | 39 | PRAIRIE FARM | 44 |
| WEYERHAUSER | 41 | HOLCOMBE | 26 |
| WEYERHAUSER | 39 | BRUCE | 52 |
| WEYERHAUSER | 55 | INGRAM-GLEN | 46 |
| WEYERHAUSER | 48 | HANNIBAL | 31 |
| WEYERHAUSER | 31 | TONY | 52 |
| WEYERHAUSER | 52 | BRUCE | 57 |
| WEYERHAUSER | 37 | HAWKINS | 66 |
| WEYERHAUSER | 33 | PRAIRIE FARM | 50 |
| WEYERHAUSER | 39 | HOLCOMBE | 29 |
| WEYERHAUSER | 41 | HAWKINS | 65 |
| WEYERHAUSER | 52 | INGRAM-GLEN | 47 |
| WEYERHAUSER | 49 | HANNIBAL | 40 |
| WEYERHAUSER | 39 | BIRCHWOOD | 37 |
| WEYERHAUSER | 38 | TONY | 25 |
| WEYERHAUSER | 37 | NEW AUBURN | 29 |

TOURNAMENT

| | | | |
|-------------|----|-------------|----|
| WHS | 30 | HAWKINS | 52 |
| WHS | 49 | GILMAN | 31 |
| WHS | 44 | INGRAM-GLEN | 43 |
| CONSOLATION | | | |





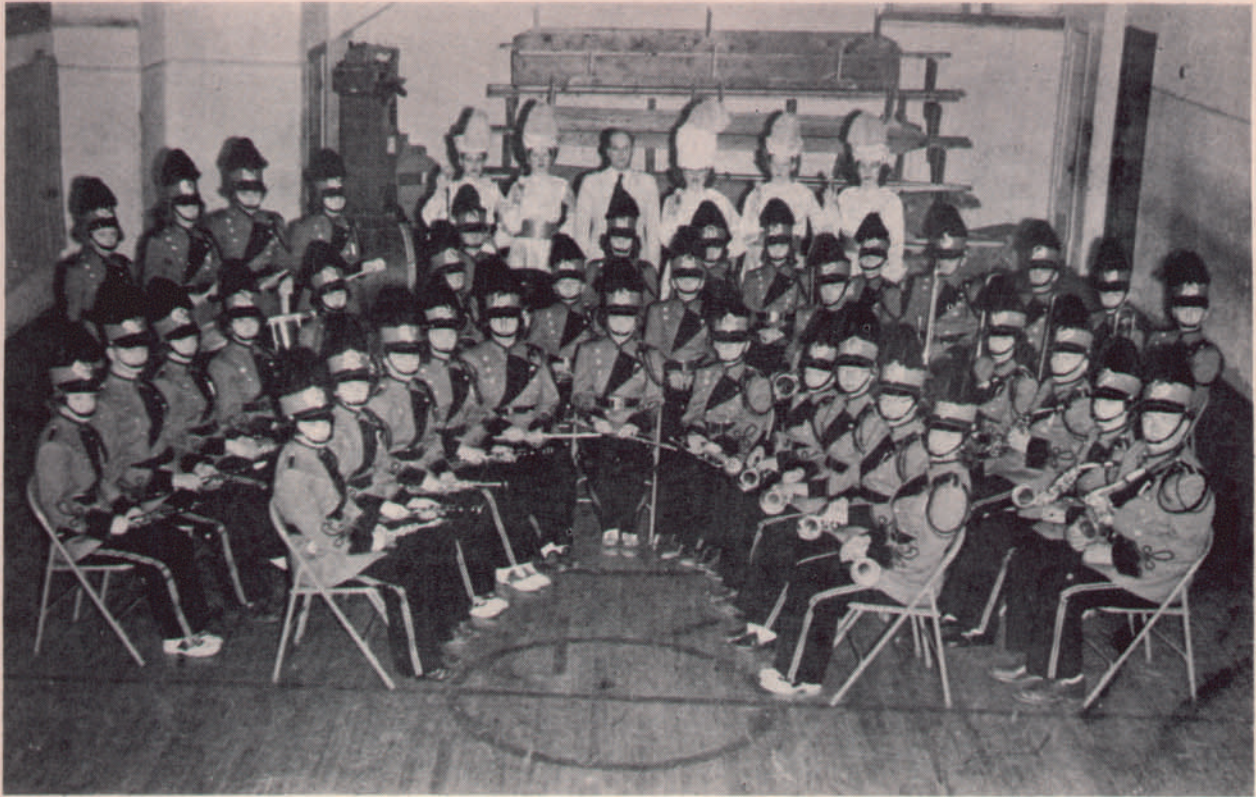
"B" Basketball Team

B.R.-Don Kolek, Anton Mujwid, Jim Kendzior, Coach Lepley, Vernon Severson, Frank Ludwikowski, Jim Benik
 F.R.-Doug Preston, Alex Zarecki, Casper Walicki, Don Ridout, Terry Mackey



Grade Basketball Team

B.R.-Danny Koehler, Dick Koehler, Marvin Johnson, Lewis Yuker, Bob Michalski, Gale Working, Bob Mackey, Bob Kolek
 F.R.-Coach Wood, David Kobliska, John Kaminski, Marvin Daniels, Teddy Blasko, Mgr. Larry Delano



WHS BAND

B.R.-Connie Klawiter, Pat Mujwid, Shirley Zahorski, Janet Preston, Marvin Daniels, Elaine Thull, Georgianna Woodruff, Roxie Thomas, Danny Koehler, Eddie Kazmierkoski, Doug Preston, Don Kolek, Bob Koehler

M.R.-Lois Anderson, Stosh Poplawski, Gerry Daniels, Barbara Pieper, Dorothy Bemis, Rodney Daniels, Dick Koehler, David Kobliska, Heavy Hanson, Christine Walicki, Jim Benik, Dolores Daniels, Mark Vorce

F.R.-Joanne Kolek, Janis Preston, Ruth Vobernik, Arlene Nelson, Marilyn Vorce, Joyce Anderson, Don Noard, Bob Kolek, Florence Cabanowski, Carol Czekalski, Betty Tatur

Drum Majorettes-Ann Kaminski, Irene Shipshock, Dorothy Zahorski, Rose Kaminski, Geraldine Kopras

Instructor Bob Wells





In the fall of 1948 the Weyerhauser band was reorganized after many years, with a membership of 28. In the spring of 1949 we participated in the Music Festival at Rice Lake, entering in Class D. We received first place in concert and second in marching. Seven members participated in solos and ensembles.

Nineteen forty-nine began our second year with 32 members. In the spring we again went to the Music Festival entering in Class C, receiving a first in concert and a first in sight reading. Due to rainy weather the parade was canceled. Eighteen members participated in solos, etc.

This year with 36 members we eagerly worked for new uniforms which we received in the spring. We are entering in Class C again this year. Many members are again working on solos and ensembles and we hope to do very well.

The Seniors in the Band this year are: Joyce Anderson, Carol Czekalski, Dolores Daniels, Harold Hanson, Joanne Kolek, Stanley Poplawski, Marilyn Vorce and Christina Walicki.

The Senior Majorettes are: Anna Kaminski, Rose Kaminski, Geraldine Kopras, Irene Shipshock and Dorothy Zahorski.



Grades 7-8

B.R.-B. Michalski, M. Daniels, L. Yaker, J. Kaminski, B. Kolek,
 B. Mackey, M. Johnson, D. Bemis
 M.R.-D. Kobliska, T. Blasko, G. Workings, L. Delano, O. Flattum
 G. Woodruff, C. Klawiter, J. Johnson
 F.R.-B. Burak, L. Sieja, B. Suski, M. Mujwid, P. Phillips,
 B. Buric, J. Tatur, Mrs. Koehler
 Absent-C. Ludwikowski, R. Sonnenberg



Grades 4-5-6

B.R.-R. Trojan, D. Delano, K. Zahorski, D. Koehler, D. Noark,
 I. Woodruff, J. Swiersz, D. Koehler
 M.R.-L. Hulbert, R. Jonjak, S. Delano, M. Mujwid, C. Novak,
 D. Kramer, J. Bartels, E. Lozowski
 F.R.-J. Mujwid, A. Trojan, R. Burak, D. Ridout, E. Romanowski,
 C. Johnson, B. Hulbert, S. Miller, D. Checkalski, Mrs.
 Bartley Absent-C. Bartels, J. Mazon, J. Gavin, T. Feraro



Grades 2-3-4

B.R.-D. Koehler, S. Koehler, K. Koehler, K. Koehler, R. Hulburt
 J. Brown, R. Hoiby, M. Koehler, S. Frenchick, J. Draus
 M.R.-W. Heuer, D. Koehler, R. Daniels, R. Anderson, B. Preston,
 D. Baxter, T. Ridout, C. Deviney, M. Anderson
 F.R.-F. Novak, J. Michalski, R. Koehler, R. Tatur, L. Bartels,
 G. Miller, C. Suski, S. Matus, Miss Diehn



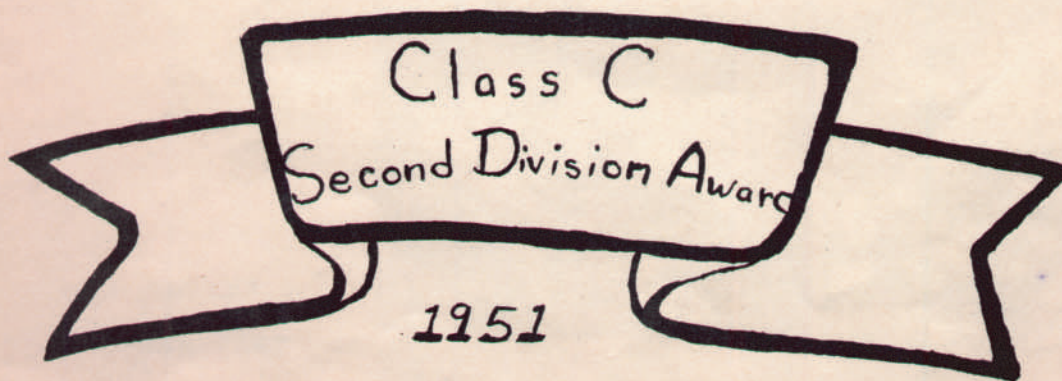
Grades 1-2

B.R.-P. Koehler, J. Jaskerny, K. Sobkoviak, B. Daniels,
 N. Crandall
 M.R.-C. Hulbert, K. Draus, D. Blasko, B. Tomasovich, J. Mujwid,
 E. Johnson, M. Wright, Miss Roffers
 F.R.-J. Trojan, M. Steiskal, A. Seija, B. Arndt, J. Noard,
 M. Kramer
 Absent-E. Burak, D. Koprass, D. Kogat, L. Mazon, J. Priem,
 P. Shipshock, J. Swiersz, L. Workings



GLEE CLUB

- B.R.-Carol Ridout, Betty Tatur, Evelyn Romanowski, Arlene Nelson, Geraldine Kopras, Irene Snipsnock, Shirley Zahorski, Shirley Swenson, Catherine Sieja
- M.R.-Director Bob Wells, Joanne Kolek, Roxie Thomas, Lois Anderson, Janis Preston, Ruth Vobernik, Dorothea Pieper, Joyce Anderson, Barbara Pieper, Janet Preston
- F.R.-Geraldine Daniels, Marilyn Vorce, Christina Walicki, Gertrude Jessick, Gloria Romanowski, Ann Kaminski, Carol Czekalski, Dorotny Zahorski, Dolores Daniels



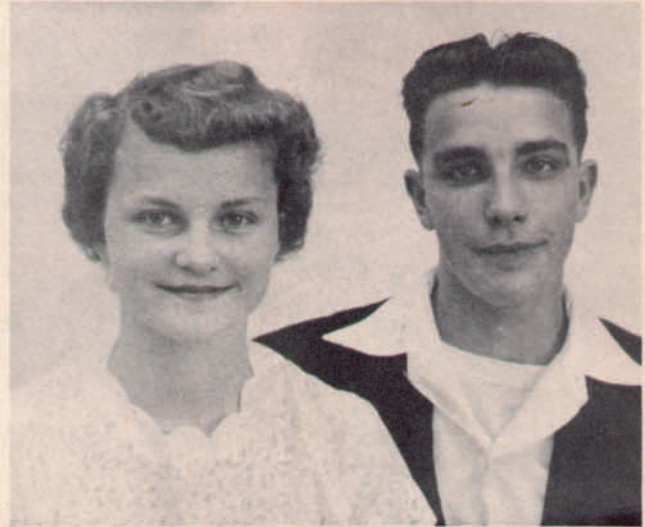


Junior Class Play
1950
"The Baby Sitter"

Junior Prom Royalty
1951



Junior Prom Royalty
1950



"Brother Betty"
Junior Class Play
1951





D.B.



Sound-off-one-two



JoKo



Handyman Mark



"George"



Annie



Musicians of yesteryear!



Just look at that sign!



Stosh and Lois



Who cares?



THE picnic



We worked for our uniforms!



Take me out to the ball-
game!



The Band Trip to Stevens Point



Well???



Bennie and his Fleet



Our chef



The missing links!



THE EDITORS