

Visitor Verification

Clintonville
Historical Society
Museum

The Iola
Historical Village

Marion
Historical Society
Museum

New London
Heritage
Historical Village

Rural
Museum

Scandinavia
Knopf Cabin
Jole Barbership

Waupaca
Holly History &
Genealogy Center

Waupaca
Historical Society
Hutchinson House

Weyauwega
Schoolhouse

Passport to History



**Your Guide to
the Historical Sites
of Waupaca County**

Win a \$100 U.S. Savings Bond or a membership in The Wisconsin Historical Society!

On the back cover of this passport is a listing of the participating historical sites located within the county. Upon visiting each of these, have your passport stamped with a “visa” indicating that you were a visitor at that site. You do not have to visit all these sites during the same year. Once you have accumulated all the visa stamps, fill out the form below and send it to the address indicated. On November 1, there will be a random drawing of all the entries to determine winners of a \$100 U.S. Savings Bond and two Wisconsin Historical Society memberships.

Welcome

The “Passport to History” program was conceived not only to introduce visitors to the wealth of historical artifacts to be found in Waupaca County, but also to make the local citizenry aware of something they might have taken for granted over their lifetime.

Currently there are eight historical societies located throughout the county. Of these, seven of them have either museums or historical buildings that are open to the public. On the following pages you’ll discover what is available at each site.

We invite visitors to enjoy as many of these sites as time permits during your stay. If you live in the area, make it a point to learn more about the heritage of your community and that of neighboring communities.

Yes, Please enter my name in the drawing for a \$100 U.S. Savings Bond and two memberships in The Wisconsin State Historical Society

Name _____

Address _____

City _____

State _____ Zip _____

Signature _____

Send the entire back page (no photocopy) of this passport to:

“Passport To History”

% Iola Historical Society

P.O. Box 412 • Iola, WI 54977

Clintonville

The Clintonville Area Historical Society
32-11th Street
Clintonville, WI 54929

Contact Sandy Loberg
25 W. 18th St. • Clintonville, WI 54929
715/823-4734



PIONEER HISTORICAL PARK: 32-11th St.

Operated by the Clintonville Historical Society. Pioneer Park is the site of three historic buildings dating to the mid-1800's

HISTORY HOUSE MUSEUM

In 1861, when Clintonville was known as the Town of Larrabee, a town hall was erected on the Northwest corner of what is now Main & Tenth streets.

In 1894, when a red-brick building was erected to take its place, the old frame building was sold to the Kuester family for a home and it was moved to its present location on Eleventh Street. The family added several rooms during their occupancy.

In 1975, the building was purchased by the Clintonville Area Historical Society for museum purposes, to provide focus on furnishings which might have appeared in a home around the beginning of the Twentieth Century. Some rooms, however, depict several collections significant to Clintonville's history and the surrounding area. One is the Eben Rexford room, with its many items from the life of this composer ("Silver Threads Among the Gold") and prolific author of horticulture.

RALPH DENN CABIN

Once a stave-making factory and home occupied by Ralph Denn and family in 1869.

This log cabin was later moved to the south bank of the Pigeon River (in W.A. Olen Park) and used for Boy Scout Troop #21. Eventually it was used for Girl Scout activities. In 1976 it was completely dismantled, each piece marked and rebuilt at its present location in Pioneer Park.

DOTY-BESSERDICH HOUSE

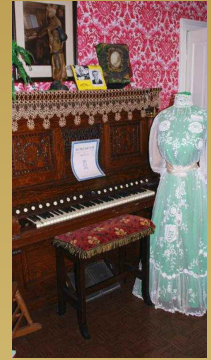
The construction of this building is unusual because it is made of cord, or stove wood, walls with pieces piled one on top of the other and held together by mortar. Cordwood was used because it was cheap.

In 1889, this house was owned by Mrs. L. Doty, who later sold it to Otto Zachow and William Besserdich (founders of the FWD Corporation).

This building is not available for tours.

SPECIAL INFORMATION

Also located in Pioneer Park, is a collection of historic stones. Among them is a section of the Great Wall of China, the only known section of the Great Wall to be removed from that country. A fascinating story of how Clintonville came to be the recipient of this awesome artifact is well worth stopping by to hear our historians recount to you!



ABOUT US

The Clintonville Area Historical Society was founded in 1975. Among the shakers and movers of this endeavor were Margaret McCauley, Bob and Jane Billings, William Kuester, Claude Chandler, Burr Tolles, and Betty Anderson.

Our nine-member board meets the second Monday of every month at our History Office located at 36 S. Main St. The board presently is using this building for research projects, workshop purposes and as an office. We are not set up as yet for hours to the public. It may take a while to get organized so others can use it for research as well, but that is our goal for the future.

Passport Tour Information **The History House Museum**

Ralph Denn Cabin

Open Sundays 1 -4 pm

June, July, and August



**Private tours may be available for groups
by calling Rich at: (715) 823-2772**

Iola



IOLA DEPOT

The Iola & Northern railroad depot was built in 1894, serving the community until the line was discontinued in 1958. Purchased by The Iola Historical Society in October of 1979, it has been restored and preserved as a museum. A section of track was laid in 1983 and a Duluth, Missabe and Iron Range caboose was installed alongside the depot on the original grade.

HELVETIA TOWN HALL

After serving the people of the Township of Helvetia for 75 years. This building was moved from its original site on Hwy GG to the Society's Depot Street complex. The old outhouse was not left behind, but was brought along and located in similar proximity as originally, as a reminder of what the old days were like. It's there to look at and reminisce about, but is not to be used for its original purpose!

LOG CABIN

The cabin houses artifacts from the late 1800's era, including a trundle bed and other pieces of furniture and equipment from early times. It has a loft, which in those days was used as sleeping quarters for the children.

ONE-ROOM SCHOOL

Having searched the area unsuccessfully for several years in the hopes of finding a one-room country schoolhouse that could be moved onto Society property, it was decided to construct a replica school based on the dimensions and styles of the era. The building was completed in 1996 and is insulated and heated for year around occupancy.



1901 FIREHOUSE

In 2007 the Society dedicated a replication of the community's original firehouse, wherein a trio of historical Iola firefighting apparatus are on display. Included are a 1913 horse-drawn Waterous pumper, 1924 Ford Model "T" hose truck, and a 1938 Reo hose/pumper truck.

Society Founding

The Iola Historical Society was founded October 28, 1953, at a meeting of interested persons at the home of R.C. Cleaves. The original officers elected were Mrs. R. Cleaves, President; Mrs. F.C. Wipf, Vice President; Mrs. G. H. Willett, secretary; and Mrs. Ellsworth Oligney, Treasurer.

Special Information

The Iola Historical Society meets monthly on the last Monday of each month, January through October at 6:30 p.m. Guests are always welcome to our meetings and special occasions.

Each year the Society hosts a Strawberry Festival. Strawberry shortcake and other refreshments are sold to those who attend and all buildings are open, including the caboose, for short tours.

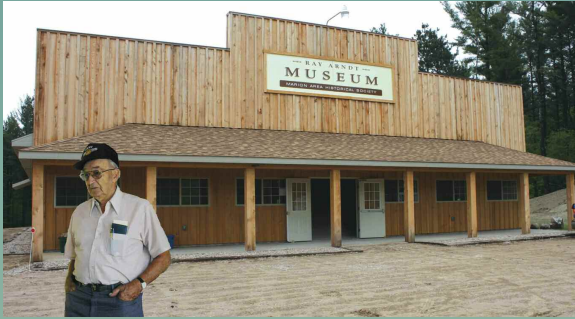
Museum Hours

**Open every Saturday of
May, June, July, August, September.
Hours: 10 am to 4 pm.**

The Iola Historical Society

305 Depot Street • Iola, WI 54945
P.O. Box 412
phone: 715-445-IOLA (4652)
iolahistoricalociety@tds.net

Marion



NEW BUILDING

The Marion Area Historical Society was honored to host a dedication program on Saturday, June 27, 2009 at the new museum building. The new museum and building was dedicated to Ray Arndt (pictured) and also to the late Bendick and Esther Bjelde. Ray has been a committed member of the Society for many years and has provided support of all kinds, including services and financial efforts. The Bjeldes made a very significant monetary bequest that allowed for the full completion of the 60'x120' building.

On display is an extensive collection of tools that was previously housed in the depot.

MARION DEPOT & CABOOSE

The original Chicago Northwestern depot is composed of waiting rooms and an office, both restored with original furnishings. Half of the depot stores many items of interest, including wooden toys from the Schoenhut Toy co., c. 1910; WWI and World War II memorabilia; an extensive collection of memorabilia from the John F. Kennedy era; a variety of Marion related items which merchants gave away to their customers during the early 1900's; many postcard photos as well as handcrafted scale model replicas of the Marion Band Stand, Perry's Boat and the First National Bank, created by the late Doug Johnson.



A Soo Line caboose was obtained in the fall of 2004. It made its final run in the summer of 1984. It was the

last wooden, cupola-style caboose to be retired. Of interest to a railroad buff is a switching station and semaphore on the grounds.

LOG CABIN

The log house depicts how it would have looked around the turn of the century. Each room is characterized with furniture and fixtures of yesteryear. The two-story house includes several bedrooms, living room and a kitchen.



LOG SCHOOLHOUSE

The one-room log schoolhouse has many school-related items such as desks, books and maps.

SPECIAL INFORMATION

Board meetings are held the third Wednesday of every month at Steve & Mary's Main Street Cafe. The meetings start at 6:00 am and all members and guests are welcome to attend.

Our annual picnic is usually held some time in July. The annual meeting is held the last Saturday of October and includes a potluck meal, election of officers, a spirited auction and drawing for raffle prizes.

SOCIETY FOUNDING

The Marion Area Historical Society was founded in 1988 through the encouragement of the Marion Economic Development Corp. and interested citizens.



**Marion Area
Historical Society
Museums are open
every Saturday from
Memorial Day until
Labor Day
1:00 pm to 4:00 pm**

**Special Tours can be
arranged by calling
Bruce Hofman
at (715) 754-2118**

**The Marion Area Historical Society
P.O. Box 321 • Marion, WI 54950**

New London



Octagon House

At the time the Octagon House was built in New London, prior to August, 1867, it was considered an architectural feat rather than an oddity. In addition to its eight-sided shape, it was quite a show-place in its time.

A cupola was located as a second story in the center of the house with steps leading up to it.

It was built on North Shawano Street near present-day Hardee's and was relocated to the Historical Village in 1989. Extensive restoration was done prior to 1990, at which time the house was furnished and made ready for viewing.

McLaughlin-Gitter Log Cabin

The cabin, which was built around 1850, was offered to the New London Heritage Historical Society in 1993. At the time it was located on the Larry Gitter farm. It was dismantled and transported to the Village grounds where it was reassembled at the edge of the wooded area to give the impression of how it must have looked in its youth.

The McLaughlin family, who built the cabin, came to America about 1832, settling first in Canada. Around 1850 the family moved to the Lebanon township in Waupaca County.

Village Chapel

The first worship services were held in the chapel in 1949 when the building was often referred to as "the little white church on McKinley Street" which was located on a portion of the property now occupied by the police department.

The building was originally called the Three Pines School and was located in the town of Liberty near New London. The school was then called the Evangelical United Brethren Church.

The building was donated to the Historical Society in August of 1991 and moved to the Heritage Village. The Chapel has been furnished as a non-denominational chapel set aside for worship and personal meditation. It is also available for weddings. Some entry rooms contain books and other historical collections.

Triangle School

The school was built in late 1857 in the Town of Hortonia. At first it was called Elms School but became known as the Triangle School in 1937. It remained open until 1948 and then was closed to the public until 1977 when the Historical Society purchased it. It was moved here in 1990.

Many of the original furnishings and school pieces, including a sand table, clock and water cooler can be found inside. The original weather vane and mannequins clothed in vintage attire give you the complete feeling that you have just stepped back in time for a day at school.

C&NW Depot/R.R. Rolling Stock

Built in 1923, this former Chicago & Northwestern passenger depot was originally located on East Beacon Ave. In 1905, eight daily passenger trains stopped at New London. The last passenger and mail trains came through here in 1954. Freight trains continued to use the depot until 1982. The depot was here in 1987.

A Laona & Northern locomotive, and a number of pieces of rolling stock, are located nearby.

New London Historical Society

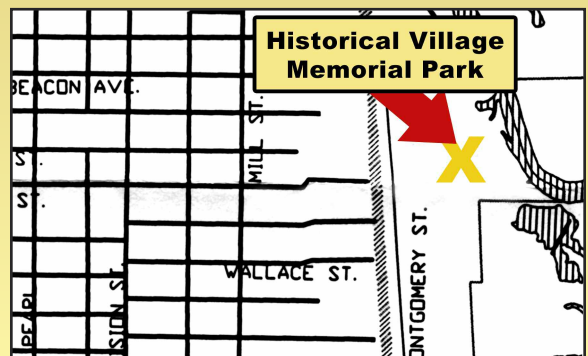
(920) 982-8557 • (920) 982-5186

New London Heritage Historical Village

Montgomery St./Memorial Park

Open the first and third Sundays

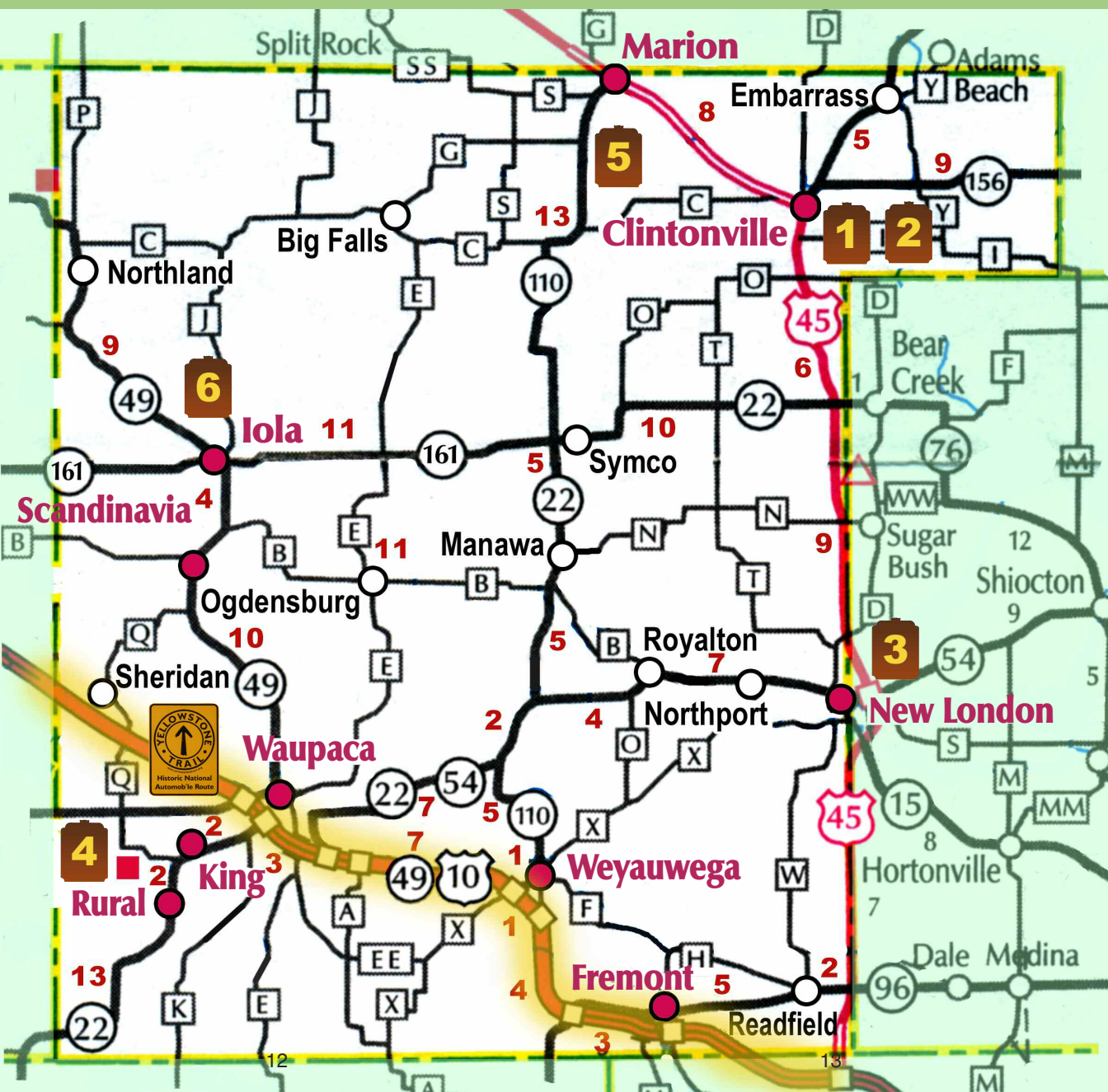
during June, July, and August. 1 to 4 p.m.



Places of Historical Interest Within Waupaca County

Cities in **Red** are those which have historical societies and/or buildings of interest.

2 Indicates a Wisconsin Historical Society marker is located in the area indicated. For more information check pages 22 and 23 of this guide for exact locations.



Scandinavia

Velkommen

Visit Historic Scandinavia



Knoph's Cabin

This log building was the first store in Scandinavia. It was built by Thomas Knoph (pronounced "ken oof"), a Norwegian immigrant from Kragero, Norway, about 1852. This store, and adjoining living space, was located on the property which is now 435 North Main Street.

In addition to being a general store, it served as the first post office in the community until January 11, 1856. Also, the Scandinavia church records show that communion services were actually held here on June 5, 1853, with 78 communicants attending including Knoph and his wife.

The Knophs served meals and took in lodgings. The price of a meal was determined by circumstances and how much a person ate.

At the first town meeting held on April 28, 1854, Thomas Knoph was elected Town Chairman. He was also elected town superintendent of schools. (There was only one school.)

Thomas Knoph (1811-1878) is buried in the Lutheran Cemetery on County Trunk G one mile north of the Village of Scandinavia.

Prior to the cabin being moved to this location, it served as a bath house on the east side of Silver Lake.



Jole's Barbershop

This barber shop was constructed by Carl Jole at a cost of \$100.00. In 1902, Carl's brother Gus began barbering in this shop. Gus sold his barbershop in 1958.

**Open to the public 1pm to 4 pm
the first Saturday of June, July,
August, and September.**

Historic buildings are located in the Community Park at the north end of Main Street.

Current Projects



Two additions to our "Historic Street" include the Eliason cabin (left) which was built in the early 1850s, and the Service Station (right) which operated from 1931 until 1964. Both are being restored at the present time.

FOSH

Friends of Scandinavia History

P.O. Box 15 • Scandinavia, WI 54977

e-mail: scandinavia@tds.net

www.friendsofscandinaviahistory.org

FOSH Meetings are held in the Municipal Center the second Tuesday of January, March, May, July, September, and November, at 7:00 p.m.

Waupaca

Waupaca Historical Society

(715) 256-9980

<http://waupacahistory.org>

The Holly History & Genealogy Center

321 S. Main St. • Waupaca, WI 54981

(Located one block south of the Waupaca Post Office)

The Waupaca Historical Society was founded in 1953 with a mission to preserve, advance and disseminate knowledge of the history of the Waupaca area. In 2001, the Society purchased and moved into the historic 1914 Carnegie Library Building at 321 S. Main St. in Waupaca and renamed it the Holly History and Genealogy Center. The Holly Center now provides the community with a history and genealogy library and research facility, an exhibition area, and a meeting and lecture room.



This "Passport to History" takes history enthusiasts into the Center for an exciting exploration of historical collections and artifacts, such as, early plat maps of Waupaca County, historical photographs, the history of Waupaca schools and Waupaca County rural schools, family histories of early settlers, a vintage telephone switchboard, and a Royal Doulton Character Jug collection.

The Holly History & Genealogy Center is open to the public on Wednesday and Friday afternoons from 1-3 p.m. during the entire year, and on Saturday mornings from 9 a.m. to noon during June, July, & August. Admission is free..

The Hutchinson House Museum

South Main Street in South Park

Waupaca, Wisconsin

The Hutchinson House, built by Chester Hutchinson's pioneer family in 1854, was purchased by the Waupaca Historical Society and moved to South Park in 1956. The home was refurbished in the Victorian style and is now open as a public museum. The Hutchinson House Museum is located on the upper level of South Park.



A "Passport to History" entry into the Hutchinson House Museum takes visitors into the pioneer home and its impressive display of household furnishings, clothing, glassware, and textiles, with many of the artifacts having ties to early settlers of Waupaca County. The Hutchinson House is a "Family-Friendly" destination. Children ages 5-12 have the option to participate in a special scavenger hunt for artifacts. Open from Memorial Day weekend to Labor Day weekend on Saturdays, Sundays, and Summer Holiday from 1 to 4 p.m. Admission is free but donations are appreciated.



Waupaca Train Depot

525 Oak St.(Cty E) just north of the railroad bridge

The Waupaca Historical Society purchased the depot building in 2004 and the building is currently being restored. The depot is open during the Strawberry Fest weekend (the 3rd weekend in June). Also open by appointment.

Weyauwega



LITTLE RED SCHOOLHOUSE

Our Little Red Schoolhouse museum is located in the Weyauwega Community Park, just off US Hwy 10 on LaSalle Street. Seniors can reminisce about days gone by, and children can learn such things as how grandma or grandpa learned to read, write and understand math without the use of a computer. Oh, how could that happen? Although not as old, the museum also houses memorabilia from Weyauwega's famous train derailment of 1996 when the entire



Interior of Weyauwega's "Little Red Schoolhouse" museum which is located in the Weyauwega Community Park.

community was displaced for 11 days. The schoolhouse is open Sundays beginning June 13 and continuing until Labor Day. Hours are 1-4 p.m. Special tours are provided by calling City Hall at (920) 867-2630 during regular work hours. While there is no admission fee charged, we do appreciate a free-will offering.

RYE FLOUR MILL ELEVATOR

For those visitors who enter Weyauwega from the north, they will first be greeted by the historically-decorated, historic-in-itself rye flour mill elevator. The mill was completed at the City's dam site in 1856 and is believed to be the state's oldest remaining rye flour elevator. It is also believed to have been the largest exclusive rye flour mill in the world at the time of operation.



HISTORY

Although there were many citizens dedicated to the preservation of Weyauwega's history, the Weyauwega Area Historical Society wasn't born until two years after the community celebrated its sesquicentennial in 2006. A special book was written for the 150th birthday, titled *Weyauwega Remembers*. A copy is located in the Weyauwega Public Library, or a copy can be requested to be shipped for your reading pleasure from your local library.

MEMBERSHIP

Anyone interested in the preservation of the Weyauwega area's history is invited to attend our bi-monthly meetings held on the fourth Tuesday at 4:00 p.m. in the Weyauwega Public Library lower-level large meeting room. Memberships, contributions, antiques and artifacts are very welcome and encouraged to help promote area heritage. To speak with the current president, please call Jim Taylor @ (715) 256-4611.

Weyauwega Area Historical Society

P. O. Box 294

Weyauwega, WI 54983

e-mail: wegahistoricalsociety@centurytel.net

Fremont

The Fremont Area Historical Society was organized August 27, 1998, and is a registered member of the Wisconsin State Historical Society. The Society is dedicated to preserving the historic past of Wolf River Crossing, the Yellowstone Trail, and the area encompassing the Town and Village of Fremont.

Meetings are held in the council room at the Fremont Village Hall nine times a year during the months of March, April, May, June, July, August, September, October, and November. A business meeting is held from 6:00 to 7:30 pm and is followed by a program of historical interest relating to the Fremont area. Guest speakers are sometimes invited.

At the present time there are no historical buildings, or a museum, that are open to visitors.

The Fremont Area Historical Society
410 South River Road
Fremont, WI 54940

Before Fremont received its name, the settlement was referred to as the Indian Crossing, or the Wolf River Crossing, as it was the only location in the 40-mile stretch between Winneconne and New London that was shallow enough for early travelers to cross the Wolf River.

On November 13, 1855 C.C. Kinsman was granted a charter to operate a ferry at this site. The ferry was a great asset for settlers rushing to homestead in the newly opened Indian Lands. Travel was such that by 1873 people in Fremont began talking about the advantages of erecting a toll bridge to replace the ferry and around 1874 or 1875 the first toll bridge was built. It changed hands a number of times and finally in June 1883 it was condemned.

In August 1888 a contract was let to construct a new bridge which was replaced by a new Bascal Lift bridge in 1922 and survived until 1976 when it was replaced by a four-lane bridge. In 2000 Highway 10 was rerouted just south of the village and the present bridge was constructed.

The Yellowstone Trail reached Fremont in 1915. The "Trail" was the first transcontinental highway to go through the northern tier of states. The road was named for the Yellowstone Park which it passed through. It was later designated as Highway 18. In 1926 Congress passed the Federal Highway Act that designated the Highway 18 east-west road as U.S. Highway 10 and a north-south road as State Highway 110.

Rural



Ashmun House

The Rural Historical Society was formed in 1988 by a number of interested residents of the village. One of its first accomplishments was the establishment of the Rural On The Crystal National Historic District. The level of preservation of the buildings in Rural is unusually high, with the owners having a clear desire to maintain the charm and historical character of the houses.

When Dayton Township vacated their old town hall it was purchased by the Society and now serves as its meeting place and museum. The Museum is devoted to the early history of Rural which was first settled in 1852 primarily by Yankees from the eastern United States who brought their heritage from Great Britain. It depicts their homes, their businesses and their community life from its beginnings through the mid-1950s and later. There are booklets available at the Museum describing the early houses, their builders and owners.

One of the most enjoyable activities is to walk around the village and observe its beauty on the banks of the Crystal River. During the months of June through September, the Museum is open on Wednesday and Sunday from 1 pm to 3 pm. There is someone available to answer questions and expand on the displays. It is located just off state highway 22, approximately 5 miles south of Waupaca.

Waupaca County Historical Markers

Waupaca County boasts six "official" state historical markers, two being located in Clintonville one each in Iola, King and New London, and a sixth in rural DuPont township south of Marion. The diversity of the sites and developments recognized are symbolic of the diversity that is the heritage of a county largely settled by 19th century Swiss, Norwegian, Danish and German immigrants.

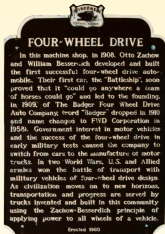


American Water Spaniel 1

One American Water Spaniel is one of five dog breeds developed in the United States. It was designated Wisconsin's official state dog in 1986. In 1988 a Wisconsin Official Marker was placed in Franklin Park in the 300 block of East Beacon Avenue/Business US-45 in New London. The breed was perfected and standardized by New London's Dr. F. J. Pfeifer.

2 Birth Of An Airline

The Clintonville Municipal airport witnessed the birth of an airline -- Wisconsin Central -- in 1944, being marked with a Wisconsin Official Marker in 1964, located on the airport grounds off 7th Street 1.5 miles east of Main Street/State Hwy 22. Fostered by the Four Wheel Drive Auto Company, the airline grew into North Central and ultimately Delta.



3 Four-Wheel Drive

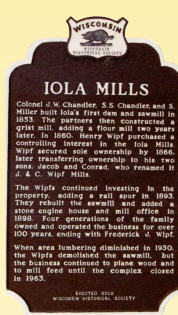
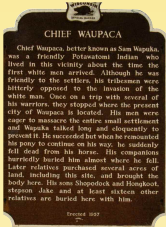
The first successful four-wheel drive automobile was developed in 1908 in a machine shop that still stands on Memorial Circle 0.2 miles east of Main Street/State Hwy. 22 in Clintonville. The Badger Four Wheel Drive Auto Company's first car was known at the "Battleship" as it could go anywhere. marker was erected in 1960 to mark this site.

4 Grand Army Home

The Grand Army Home at King was established in 1867 to serve Union veterans of the Civil War and became the first veterans' home in the country to allow women to become members. It is historically recognized with a Wisconsin Official Marker erected in 1988 adjacent to the Marden Memorial Center just off County Hwy. QQ.

5 Chief Waupaca

The final resting place of Chief Waupaca and several of his close relatives is located in a small grove 3.9 miles south of Marion on the east side of State Hwy. 10. This site in 1957 was marked with the first Wisconsin Official Marker placed in Waupaca County, having been originally marked with a stone monument erected in May of 1926 by local historians.



6 Iola Mills

The 1853 establishment of the historic Iola Mills is recognized by an official Wisconsin Historical Society marker placed at the intersection of state highways 49 north and 161 west in 2008. Operated by four generations of the Wipf family until it was closed down in 1963, it has been undergoing restoration in recent years and has an operating electricity generating turbine.

Yellowstone Trail

Establishment of a historic Yellowstone Trail dates back to 1912, when a group of small town businesses stretching from the Great Lakes to the Pacific Northwest joined forces to locate and mark a reliable cross-county auto travel route by way of Yellowstone National Park.

The route of the Yellowstone Trail across much of Wisconsin was subsequently designated as US-10 when the U.S. Bureau of Public Roads in 1926 established a long distance highway Route system. Eight years earlier Wisconsin had become the first state to establish a numerically designate highway route system, most states having in the meantime adopted its model.

Travelers driving the Yellowstone Trail from west to east entered Waupaca county on Pipe Road about a mile west of Sheridan. They then passed through Waupaca, Weyauwega and Fremont. The trail exited into Winnebago county about a mile east of Readfield, or alternatively into Winnebago county about a mile south of Fremont on present day county hwy. I, at various times during its heyday.

